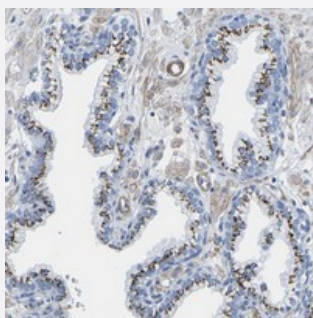


SLC45A3 polyclonal antibody

Catalog # PAB21056 Size 100 uL

Applications



Immunohistochemistry (Formalin/PFA-fixed paraffin-embedded sections)

Immunohistochemical staining of human prostate with SLC45A3 polyclonal antibody (Cat # PAB21056) strong cytoplasmic positivity in glandular cells at 1:200-1:500 dilution.

Specification

Product Description	Rabbit polyclonal antibody raised against recombinant SLC45A3.
Immunogen	Recombinant protein corresponding to amino acids of human SLC45A3.
Sequence	AEEAALGPTEPAEGLSAPSLSPHCCPCRARLAFRNLGALLPRLHQLCCRMP
Host	Rabbit
Reactivity	Human
Form	Liquid
Purification	Antigen affinity purification
Isotype	IgG
Recommend Usage	Immunohistochemistry (1:200-1:500) The optimal working dilution should be determined by the end user.
Storage Buffer	In PBS, pH 7.2 (40% glycerol, 0.02% sodium azide)
Storage Instruction	Store at 4°C. For long term storage store at -20°C. Aliquot to avoid repeated freezing and thawing.

Note

This product contains sodium azide: a POISONOUS AND HAZARDOUS SUBSTANCE which should be handled by trained staff only.

Applications

- Immunohistochemistry (Formalin/PFA-fixed paraffin-embedded sections)

Immunohistochemical staining of human prostate with SLC45A3 polyclonal antibody (Cat # PAB21056) strong cytoplasmic positivity in glandular cells at 1:200-1:500 dilution.

Gene Info — SLC45A3

Entrez GeneID [85414](#)

Protein Accession# [Q96JT2](#)

Gene Name SLC45A3

Gene Alias IPCA-2, IPCA-6, IPCA-8, IPCA6, PCANAP2, PCANAP6, PCANAP8, PRST

Gene Description solute carrier family 45, member 3

Omim ID [605097](#)

Gene Ontology [Hyperlink](#)

Gene Summary O

Other Designations OTTHUMP00000035340|prostate cancer associated protein 2|prostate cancer associated protein 6|prostate cancer associated protein 8|prostate cancer-associated gene 2|prostate cancer-associated gene 6|prostate cancer-associated gene 8|protein