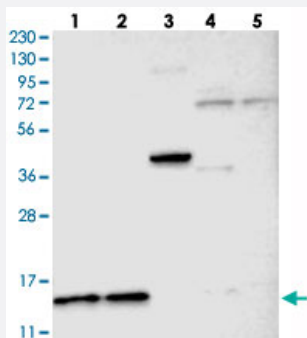


# C22orf40 polyclonal antibody

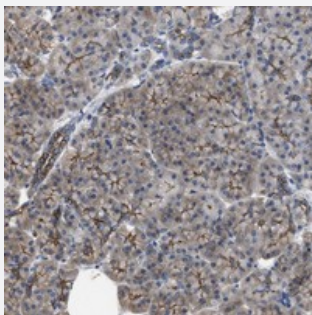
Catalog # PAB21047      Size 100 uL

## Applications



### Western Blot

Western blot analysis of Lane 1: RT-4, Lane 2: U-251 MG, Lane 3: Human Plasma, Lane 4: Liver, Lane 5: Tonsil with C22orf40 polyclonal antibody (Cat # PAB21047) at 1:250-1:500 dilution.



### Immunohistochemistry (Formalin/PFA-fixed paraffin-embedded sections)

Immunohistochemical staining of human pancreas with C22orf40 polyclonal antibody (Cat # PAB21047) shows distinct positivity in intercalated ducts and exocrine cells at 1:50-1:200 dilution.

## Specification

<b>Product Description</b>	Rabbit polyclonal antibody raised against recombinant C22orf40.
<b>Immunogen</b>	Recombinant protein corresponding to amino acids of human C22orf40.
<b>Sequence</b>	RPLGVFECELCTLTAPYSYVGQKPPNTQSMVLLEESYVMKDPFTSDKDRFLVLGSCCSLCSRLV CVGPECSLFYSKRFLPCVRENINAFPEIRQDLEKRKAPSK
<b>Host</b>	Rabbit
<b>Reactivity</b>	Human
<b>Form</b>	Liquid

Purification	Antigen affinity purification
Isotype	IgG
Recommend Usage	Immunohistochemistry (1:50-1:200) Western Blot (1:250-1:500) The optimal working dilution should be determined by the end user.
Storage Buffer	In PBS, pH 7.2 (40% glycerol, 0.02% sodium azide)
Storage Instruction	Store at 4°C. For long term storage store at -20°C. Aliquot to avoid repeated freezing and thawing.
Note	This product contains sodium azide: a POISONOUS AND HAZARDOUS SUBSTANCE which should be handled by trained staff only.

## Applications

- Western Blot

Western blot analysis of Lane 1: RT-4, Lane 2: U-251 MG, Lane 3: Human Plasma, Lane 4: Liver, Lane 5: Tonsil with C22orf40 polyclonal antibody (Cat # PAB21047) at 1:250-1:500 dilution.

- Immunohistochemistry (Formalin/PFA-fixed paraffin-embedded sections)

Immunohistochemical staining of human pancreas with C22orf40 polyclonal antibody (Cat # PAB21047) shows distinct positivity in intercalated ducts and exocrine cells at 1:50-1:200 dilution.

## Gene Info — C22orf40

Entrez GeneID	<a href="#">150383</a>
Protein Accession#	<a href="#">Q6NVV7</a>
Gene Name	C22orf40
Gene Alias	-
Gene Description	chromosome 22 open reading frame 40
Gene Ontology	<a href="#">Hyperlink</a>
Other Designations	OTTHUMP00000028822 OTTHUMP00000042154 hypothetical protein LOC150383