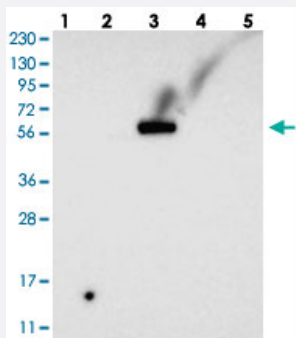


# PPM2C polyclonal antibody

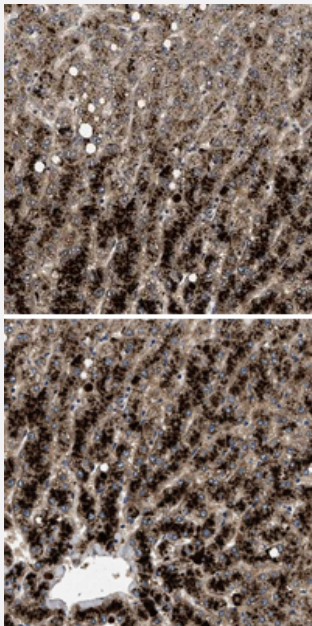
Catalog # PAB21039      Size 100 uL

## Applications



### Western Blot

Western blot analysis of Lane 1: RT-4, Lane 2: U-251 MG, Lane 3: Human Plasma, Lane 4: Liver, Lane 5: Tonsil with PPM2C polyclonal antibody (Cat # PAB21039).



### Immunohistochemistry (Formalin/PFA-fixed paraffin-embedded sections)

Immunohistochemical staining of human liver with PPM2C polyclonal antibody (Cat # PAB21039) shows distinct cytoplasmic positivity in hepatocytes.

## Specification

### Product Description

Rabbit polyclonal antibody raised against recombinant PPM2C.

### Immunogen

Recombinant protein corresponding to amino acids of human PPM2C.

Sequence	YLTPPQVNSILKANEYSFKVPEFDGKNVSSILGFDSNQLPANAPIEDRRSAATCLQTRGMLLGVFD GHAGCACSQ
Host	Rabbit
Reactivity	Human
Form	Liquid
Purification	Antigen affinity purification
Isotype	IgG
Recommend Usage	Immunohistochemistry (1:10-1:20) Western Blot (1:250-1:500) The optimal working dilution should be determined by the end user.
Storage Buffer	In PBS, pH 7.2 (40% glycerol, 0.02% sodium azide)
Storage Instruction	Store at 4°C. For long term storage store at -20°C. Aliquot to avoid repeated freezing and thawing.
Note	This product contains sodium azide: a POISONOUS AND HAZARDOUS SUBSTANCE which should be handled by trained staff only.

## Applications

- Western Blot

Western blot analysis of Lane 1: RT-4, Lane 2: U-251 MG, Lane 3: Human Plasma, Lane 4: Liver, Lane 5: Tonsil with PPM2C polyclonal antibody (Cat # PAB21039).

- Immunohistochemistry (Formalin/PFA-fixed paraffin-embedded sections)

Immunohistochemical staining of human liver with PPM2C polyclonal antibody (Cat # PAB21039) shows distinct cytoplasmic positivity in hepatocytes.

## Gene Info — PPM2C

Entrez GeneID	<a href="#">54704</a>
Protein Accession#	<a href="#">Q9P0J1</a>
Gene Name	PPM2C
Gene Alias	FLJ32517, MGC119646, PDH, PDP, PDP1, PDPC
Gene Description	protein phosphatase 2C, magnesium-dependent, catalytic subunit

Omim ID	<a href="#">605993 608782</a>
Gene Ontology	<a href="#">Hyperlink</a>
Gene Summary	<p>Pyruvate dehydrogenase (E1) is one of the three components (E1, E2, and E3) of the large pyruvate dehydrogenase complex. Pyruvate dehydrogenase kinases catalyze phosphorylation of serine residues of E1 to inactivate the E1 component and inhibit the complex. Pyruvate dehydrogenase phosphatases catalyze the dephosphorylation and activation of the E1 component to reverse the effects of pyruvate dehydrogenase kinases. Pyruvate dehydrogenase phosphatase is a heterodimer consisting of catalytic and regulatory subunits. Two catalytic subunits have been reported; one is predominantly expressed in skeletal muscle and another one is much more abundant in the liver. The catalytic subunit, encoded by this gene, is the former, and belongs to the protein phosphatase 2C (PP2C) superfamily. Along with the pyruvate dehydrogenase complex and pyruvate dehydrogenase kinases, this enzyme is located in the mitochondrial matrix. Mutation in this gene causes pyruvate dehydrogenase phosphatase deficiency. Multiple alternatively spliced transcript variants encoding different isoforms have been identified.[provided by RefSeq]</p>
Other Designations	pyruvate dehydrogenase (Lipoamide) phosphatase-phosphatase pyruvate dehydrogenase phosphatase