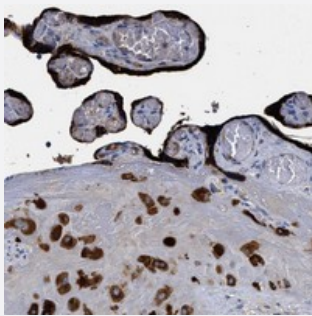


# PAPPA2 polyclonal antibody

Catalog # PAB21036      Size 100 uL

## Applications



### Immunohistochemistry (Formalin/PFA-fixed paraffin-embedded sections)

Immunohistochemical staining of human placenta with PAPPA2 polyclonal antibody (Cat # PAB21036) shows strong cytoplasmic positivity in trophoblastic and decidual cells at 1:10-1:20 dilution.

## Specification

Product Description	Rabbit polyclonal antibody raised against recombinant PAPPA2.
Immunogen	Recombinant protein corresponding to amino acids of human PAPPA2.
Sequence	NPAGLRGAVEEPAAPWVGDSPIGQSELLGDDDAYLGNQRSKESLGEAGIQKGSAMAATTTTAIFT TLNEPKPETQRRGWAKSRQRRQVWKRAEDGQGDSGISSHFQPWPKH
Host	Rabbit
Reactivity	Human
Form	Liquid
Purification	Antigen affinity purification
Isotype	IgG
Recommend Usage	Immunohistochemistry (1:10-1:20) The optimal working dilution should be determined by the end user.
Storage Buffer	In PBS, pH 7.2 (40% glycerol, 0.02% sodium azide)

**Storage Instruction**

Store at 4°C. For long term storage store at -20°C.  
Aliquot to avoid repeated freezing and thawing.

**Note**

This product contains sodium azide: a POISONOUS AND HAZARDOUS SUBSTANCE which should be handled by trained staff only.

## Applications

- Immunohistochemistry (Formalin/PFA-fixed paraffin-embedded sections)

Immunohistochemical staining of human placenta with PAPPA2 polyclonal antibody (Cat # PAB21036) shows strong cytoplasmic positivity in trophoblastic and decidual cells at 1:10-1:20 dilution.

## Gene Info — PAPPA2

**Entrez GeneID** [60676](#)

**Protein Accession#** [Q9BXP8](#)

**Gene Name** PAPPA2

**Gene Alias** PAPP-A2, PAPPE, PLAC3

**Gene Description** pappalysin 2

**Gene Ontology** [Hyperlink](#)

**Other Designations** OTTHUMP00000032951|OTTHUMP00000032980|placenta-specific 3|pregnancy-associated plasma preproprotein-A2|pregnancy-associated plasma protein-E

## Disease

- [Tobacco Use Disorder](#)