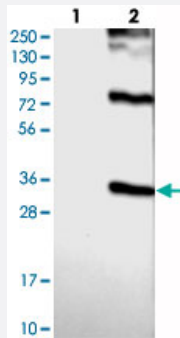


BTG3 polyclonal antibody

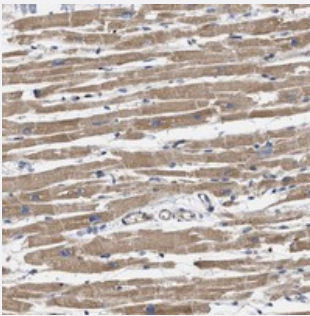
Catalog # PAB21035 Size 100 uL

Applications



Western Blot (Transfected lysate)

Western blot analysis of Lane 1: Negative control (vector only transfected HEK293T lysate), Lane 2: Over-expression Lysate (Co-expressed with a C-terminal myc-DDK tag (~3.1 kDa) in mammalian HEK293T cells) with BTG3 polyclonal antibody (Cat # PAB21035).



Immunohistochemistry (Formalin/PFA-fixed paraffin-embedded sections)

Immunohistochemical staining of human heart muscle with BTG3 polyclonal antibody (Cat # PAB21035) shows cytoplasmic positivity in myocytes.

Specification

Product Description	Rabbit polyclonal antibody raised against recombinant BTG3.
Immunogen	Recombinant protein corresponding to amino acids of human BTG3.
Sequence	VDPCEVCCRYGEKNNAFIVASFENKDENKDEISRKVTRALDKVTSDYHSGSSSSDEETSKEMEVPKSSVT
Host	Rabbit
Reactivity	Human
Form	Liquid

Purification	Antigen affinity purification
Isotype	IgG
Recommend Usage	Immunohistochemistry (1:50-1:200) Western Blot (1:250-1:500) The optimal working dilution should be determined by the end user.
Storage Buffer	In PBS, pH 7.2 (40% glycerol, 0.02% sodium azide)
Storage Instruction	Store at 4°C. For long term storage store at -20°C. Aliquot to avoid repeated freezing and thawing.
Note	This product contains sodium azide: a POISONOUS AND HAZARDOUS SUBSTANCE which should be handled by trained staff only.

Applications

- Western Blot (Transfected lysate)

Western blot analysis of Lane 1: Negative control (vector only transfected HEK293T lysate), Lane 2: Over-expression Lysate (Co-expressed with a C-terminal myc-DDK tag (~3.1 kDa) in mammalian HEK293T cells) with BTG3 polyclonal antibody (Cat # PAB21035).

- Immunohistochemistry (Formalin/PFA-fixed paraffin-embedded sections)

Immunohistochemical staining of human heart muscle with BTG3 polyclonal antibody (Cat # PAB21035) shows cytoplasmic positivity in myocytes.

Gene Info — BTG3

Entrez GeneID	10950
Protein Accession#	Q14201
Gene Name	BTG3
Gene Alias	ANA, MGC8928, TOB5, TOB55, TOFA
Gene Description	BTG family, member 3
Omim ID	605674
Gene Ontology	Hyperlink

Gene Summary

The protein encoded by this gene is a member of the BTG/Tob family. This family has structurally related proteins that appear to have antiproliferative properties. This encoded protein might play a role in neurogenesis in the central nervous system. Two transcript variants encoding different isoforms have been found for this gene. [provided by RefSeq]

Other Designations

B-cell translocation gene 3|abundant in neuroepithelium area