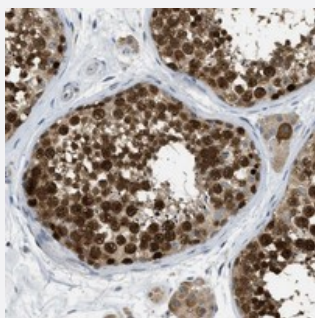


C21orf45 polyclonal antibody

Catalog # PAB21028

Size 100 uL

Applications



Immunohistochemistry (Formalin/PFA-fixed paraffin-embedded sections)

Immunohistochemical staining of human testis with C21orf45 polyclonal antibody (Cat # PAB21028) shows strong nuclear positivity in cells in seminiferous ducts. Sertoli cells are generally negative.

Specification

Product Description	Rabbit polyclonal antibody raised against recombinant C21orf45.
Immunogen	Recombinant protein corresponding to amino acids of human C21orf45.
Sequence	KNLDYKRDLFCLSVEAIESYVLGSSEKQMVSEDKELFNLESRVEIEKSLTQMEDVLKALQMKLWEA ESKLSFATC
Host	Rabbit
Reactivity	Human
Form	Liquid
Purification	Antigen affinity purification
Isotype	IgG
Recommend Usage	Immunohistochemistry (1:20-1:50) The optimal working dilution should be determined by the end user.
Storage Buffer	In PBS, pH 7.2 (40% glycerol, 0.02% sodium azide)

Storage Instruction

Store at 4°C. For long term storage store at -20°C.
Aliquot to avoid repeated freezing and thawing.

Note

This product contains sodium azide: a POISONOUS AND HAZARDOUS SUBSTANCE which should be handled by trained staff only.

Applications

- Immunohistochemistry (Formalin/PFA-fixed paraffin-embedded sections)

Immunohistochemical staining of human testis with C21orf45 polyclonal antibody (Cat # PAB21028) shows strong nuclear positivity in cells in seminiferous ducts. Sertoli cells are generally negative.

Gene Info — C21orf45

Entrez GeneID[54069](#)**Protein Accession#**[Q9NYP9](#)**Gene Name**

C21orf45

Gene Alias

B28, C21orf46, FASP1, MIS18alpha

Gene Description

chromosome 21 open reading frame 45

Gene Ontology[Hyperlink](#)**Other Designations**

FAPP1-associated protein 1