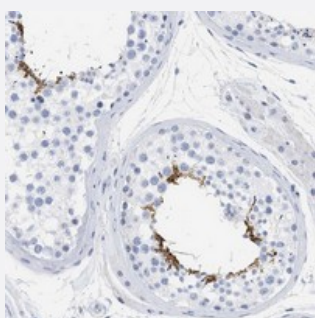


SPATA3 polyclonal antibody

Catalog # PAB21026 Size 100 uL

Applications



Immunohistochemistry (Formalin/PFA-fixed paraffin-embedded sections)

Immunohistochemical staining of human testis with SPATA3 polyclonal antibody (Cat # PAB21026) shows distinct positivity in a fraction of cells in seminiferous ducts at 1:50-1:200 dilution.

Specification

Product Description	Rabbit polyclonal antibody raised against recombinant SPATA3.
Immunogen	Recombinant protein corresponding to amino acids of human SPATA3.
Sequence	MKKVKKKRSEARRHRDSTSQHASSNSTSQQPSPSTPQQPSPSTPQHSSLETTSRQPAFQAL PAPEIRRSSCCLLSPDAN
Host	Rabbit
Reactivity	Human
Form	Liquid
Purification	Antigen affinity purification
Isotype	IgG
Recommend Usage	Immunohistochemistry (1:50-1:200) The optimal working dilution should be determined by the end user.
Storage Buffer	In PBS, pH 7.2 (40% glycerol, 0.02% sodium azide)

Storage Instruction

Store at 4°C. For long term storage store at -20°C.
Aliquot to avoid repeated freezing and thawing.

Note

This product contains sodium azide: a POISONOUS AND HAZARDOUS SUBSTANCE which should be handled by trained staff only.

Applications

- Immunohistochemistry (Formalin/PFA-fixed paraffin-embedded sections)

Immunohistochemical staining of human testis with SPATA3 polyclonal antibody (Cat # PAB21026) shows distinct positivity in a fraction of cells in seminiferous ducts at 1:50-1:200 dilution.

Gene Info — SPATA3

Entrez GeneID [130560](#)

Protein Accession# [Q8NHX4](#)

Gene Name SPATA3

Gene Alias TSARG1

Gene Description spermatogenesis associated 3

Gene Ontology [Hyperlink](#)

Other Designations -

Disease

- [Tobacco Use Disorder](#)