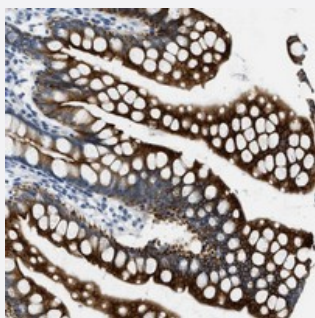


# C16orf80 polyclonal antibody

Catalog # PAB21020      Size 100 uL

## Applications



### Immunohistochemistry (Formalin/PFA-fixed paraffin-embedded sections)

Immunohistochemical staining of human small intestine with C16orf80 polyclonal antibody (Cat # PAB21020) strong cytoplasmic positivity in glandular cells.

## Specification

Product Description	Rabbit polyclonal antibody raised against recombinant C16orf80.
Immunogen	Recombinant protein corresponding to amino acids of human C16orf80.
Sequence	GFLSILYSIGSKPLQWDKKVRNGHIKRITDNDIQSLVLEIEGTNVSTTYITCPADPKKTLGIKLPFLVMII KNLKKYFTFEVQVLDDKNVRRRFRASNYQSTTRVKPFICTMPMLDDGWNQIQFNLL
Host	Rabbit
Reactivity	Human
Form	Liquid
Purification	Antigen affinity purification
Isotype	IgG
Recommend Usage	Immunohistochemistry (1:20-1:50) The optimal working dilution should be determined by the end user.
Storage Buffer	In PBS, pH 7.2 (40% glycerol, 0.02% sodium azide)

**Storage Instruction**

Store at 4°C. For long term storage store at -20°C.  
Aliquot to avoid repeated freezing and thawing.

**Note**

This product contains sodium azide: a POISONOUS AND HAZARDOUS SUBSTANCE which should be handled by trained staff only.

## Applications

- Immunohistochemistry (Formalin/PFA-fixed paraffin-embedded sections)

Immunohistochemical staining of human small intestine with C16orf80 polyclonal antibody (Cat # PAB21020) strong cytoplasmic positivity in glandular cells.

## Gene Info — C16orf80

**Entrez GeneID**[29105](#)**Protein Accession#**[Q9Y6A4](#)**Gene Name**

C16orf80

**Gene Alias**

EVORF, GTL3, fSAP23

**Gene Description**

chromosome 16 open reading frame 80

**Gene Ontology**[Hyperlink](#)**Other Designations**

functional spliceosome-associated protein 23|gene trap locus 3|transcription factor IIB