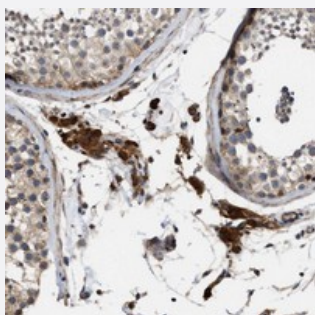


# SLC4A11 polyclonal antibody

Catalog # PAB21015      Size 100 uL

## Applications



### Immunohistochemistry (Formalin/PFA-fixed paraffin-embedded sections)

Immunohistochemical staining of human testis with SLC4A11 polyclonal antibody (Cat # PAB21015) shows strong positivity in Leydig cells.

## Specification

Product Description	Rabbit polyclonal antibody raised against recombinant SLC4A11.
Immunogen	Recombinant protein corresponding to amino acids of human SLC4A11.
Sequence	TNTENEATSGGCVLLHTSRKYLKLNFKEEIRAHRLDGLAQASV/LNETATSLDNVLR TMLRRFA RDPDNNEPNCNLDLLMAMLF TDAGAPMRGKVHLL
Host	Rabbit
Reactivity	Human
Form	Liquid
Purification	Antigen affinity purification
Isotype	IgG
Recommend Usage	Immunohistochemistry (1:50-1:200) The optimal working dilution should be determined by the end user.
Storage Buffer	In PBS, pH 7.2 (40% glycerol, 0.02% sodium azide)

**Storage Instruction**

Store at 4°C. For long term storage store at -20°C.  
Aliquot to avoid repeated freezing and thawing.

**Note**

This product contains sodium azide: a POISONOUS AND HAZARDOUS SUBSTANCE which should be handled by trained staff only.

## Applications

- Immunohistochemistry (Formalin/PFA-fixed paraffin-embedded sections)

Immunohistochemical staining of human testis with SLC4A11 polyclonal antibody (Cat # PAB21015) shows strong positivity in Leydig cells.

## Gene Info — SLC4A11

**Entrez GeneID**[83959](#)**Protein Accession#**[Q8NBS3](#)**Gene Name**

SLC4A11

**Gene Alias**

BTR1, CDPD, CDPD1, CHED2, MGC126418, MGC126419, NABC1, dJ79416.2

**Gene Description**

solute carrier family 4, sodium borate transporter, member 11

**Omim ID**[217700 610206](#)**Gene Ontology**[Hyperlink](#)**Gene Summary**

sodium borate transporter

**Other Designations**

OTTHUMP00000030097|bicarbonate transporter related protein 1|sodium-coupled borate cotransporter 1|solute carrier family 4 member 11|solute carrier family 4, sodium bicarbonate transporter-like, member 11