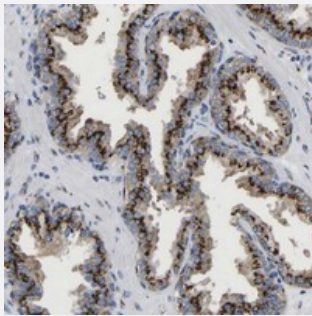


TMEM87A polyclonal antibody

Catalog # PAB21012 Size 100 uL

Applications



Immunohistochemistry (Formalin/PFA-fixed paraffin-embedded sections)

Immunohistochemical staining of human prostate with TMEM87A polyclonal antibody (Cat # PAB21012) shows strong cytoplasmic positivity with a granular pattern in glandular cells at 1:50-1:200 dilution.

Specification

Product Description	Rabbit polyclonal antibody raised against recombinant TMEM87A.
Immunogen	Recombinant protein corresponding to amino acids of human TMEM87A.
Sequence	RPSANNQRFAFSPLSEEEEEDEQKEPMLKESFEGMKMRSTKQEPNGNSKVNKAQEDDLKWVE ENVPSSVTDVALPALLDSDEERMITHFE
Host	Rabbit
Reactivity	Human
Form	Liquid
Purification	Antigen affinity purification
Isotype	IgG
Recommend Usage	Immunohistochemistry (1:50-1:200) The optimal working dilution should be determined by the end user.
Storage Buffer	In PBS, pH 7.2 (40% glycerol, 0.02% sodium azide)

Storage Instruction

Store at 4°C. For long term storage store at -20°C.
Aliquot to avoid repeated freezing and thawing.

Note

This product contains sodium azide: a POISONOUS AND HAZARDOUS SUBSTANCE which should be handled by trained staff only.

Applications

- Immunohistochemistry (Formalin/PFA-fixed paraffin-embedded sections)

Immunohistochemical staining of human prostate with TMEM87A polyclonal antibody (Cat # PAB21012) shows strong cytoplasmic positivity with a granular pattern in glandular cells at 1:50-1:200 dilution.

Gene Info — TMEM87A

Entrez GeneID[25963](#)**Protein Accession#**[Q8NBN3](#)**Gene Name**

TMEM87A

Gene Alias

DKFZp564G2022

Gene Description

transmembrane protein 87A

Gene Ontology[Hyperlink](#)**Other Designations**

-