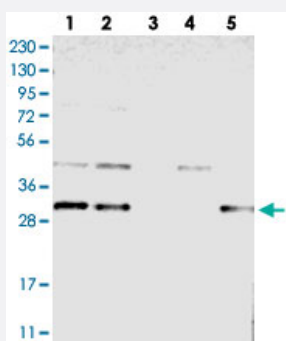


TMEM17 polyclonal antibody

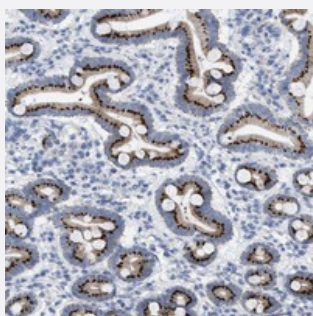
Catalog # PAB21011 Size 100 uL

Applications



Western Blot

Western blot analysis of Lane 1: RT-4, Lane 2: U-251 MG, Lane 3: Human Plasma, Lane 4: Liver, Lane 5: Tonsil with TMEM17 polyclonal antibody (Cat # PAB21011) at 1:250-1:500 dilution.



Immunohistochemistry (Formalin/PFA-fixed paraffin-embedded sections)

Immunohistochemical staining of human duodenum with TMEM17 polyclonal antibody (Cat # PAB21011) shows strong cytoplasmic positivity with a granular pattern in glandular cells at 1:20-1:50 dilution.

Specification

Product Description	Rabbit polyclonal antibody raised against recombinant TMEM17.
Immunogen	Recombinant protein corresponding to amino acids of human TMEM17.
Sequence	MVNQLAVRFHLQDFDRLSANRGDMRRMRSCIEEI
Host	Rabbit
Reactivity	Human
Form	Liquid
Purification	Antigen affinity purification

Isotype	IgG
Recommend Usage	Immunohistochemistry (1:20-1:50) Western Blot (1:250-1:500) The optimal working dilution should be determined by the end user.
Storage Buffer	In PBS, pH 7.2 (40% glycerol, 0.02% sodium azide)
Storage Instruction	Store at 4°C. For long term storage store at -20°C. Aliquot to avoid repeated freezing and thawing.
Note	This product contains sodium azide: a POISONOUS AND HAZARDOUS SUBSTANCE which should be handled by trained staff only.

Applications

- Western Blot

Western blot analysis of Lane 1: RT-4, Lane 2: U-251 MG, Lane 3: Human Plasma, Lane 4: Liver, Lane 5: Tonsil with TMEM17 polyclonal antibody (Cat # PAB21011) at 1:250-1:500 dilution.

- Immunohistochemistry (Formalin/PFA-fixed paraffin-embedded sections)

Immunohistochemical staining of human duodenum with TMEM17 polyclonal antibody (Cat # PAB21011) shows strong cytoplasmic positivity with a granular pattern in glandular cells at 1:20-1:50 dilution.

Gene Info — TMEM17

Entrez GeneID	200728
Protein Accession#	Q86X19
Gene Name	TMEM17
Gene Alias	FLJ34583
Gene Description	transmembrane protein 17
Gene Ontology	Hyperlink
Other Designations	-