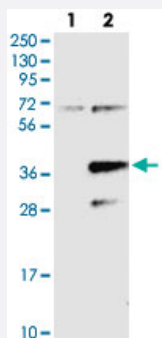


# PPAPDC2 polyclonal antibody

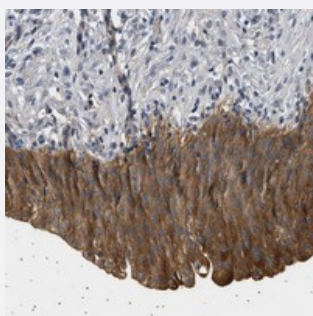
Catalog # PAB21010      Size 100 uL

## Applications



### Western Blot (Transfected lysate)

Western blot analysis of Lane 1: Negative control (vector only transfected HEK293T lysate), Lane 2: Over-expression Lysate (Co-expressed with a C-terminal myc-DDK tag (~3.1 kDa) in mammalian HEK293T cells) with PPAPDC2 polyclonal antibody (Cat # PAB21010) at 1:250-1:500 dilution.



### Immunohistochemistry (Formalin/PFA-fixed paraffin-embedded sections)

Immunohistochemical staining of human urinary bladder with PPAPDC2 polyclonal antibody (Cat # PAB21010) shows strong cytoplasmic positivity in urothelial cells at 1:50-1:200 dilution.

## Specification

<b>Product Description</b>	Rabbit polyclonal antibody raised against recombinant PPAPDC2.
<b>Immunogen</b>	Recombinant protein corresponding to amino acids of human PPAPDC2.
<b>Sequence</b>	PAHNQMDMFVTLSDKYSFSPSGHATRAALMSR
<b>Host</b>	Rabbit
<b>Reactivity</b>	Human
<b>Form</b>	Liquid
<b>Purification</b>	Antigen affinity purification

Isotype	IgG
Recommend Usage	Immunohistochemistry (1:50-1:200) Western Blot (1:250-1:500) The optimal working dilution should be determined by the end user.
Storage Buffer	In PBS, pH 7.2 (40% glycerol, 0.02% sodium azide)
Storage Instruction	Store at 4°C. For long term storage store at -20°C. Aliquot to avoid repeated freezing and thawing.
Note	This product contains sodium azide: a POISONOUS AND HAZARDOUS SUBSTANCE which should be handled by trained staff only.

## Applications

- Western Blot (Transfected lysate)

Western blot analysis of Lane 1: Negative control (vector only transfected HEK293T lysate), Lane 2: Over-expression Lysate (Co-expressed with a C-terminal myc-DDK tag (~3.1 kDa) in mammalian HEK293T cells) with PPAPDC2 polyclonal antibody (Cat # PAB21010) at 1:250-1:500 dilution.

- Immunohistochemistry (Formalin/PFA-fixed paraffin-embedded sections)

Immunohistochemical staining of human urinary bladder with PPAPDC2 polyclonal antibody (Cat # PAB21010) shows strong cytoplasmic positivity in urothelial cells at 1:50-1:200 dilution.

## Gene Info — PPAPDC2

Entrez GeneID	<a href="#">403313</a>
Protein Accession#	<a href="#">Q8IY26</a>
Gene Name	PPAPDC2
Gene Alias	FLJ46512, FLJ90191, MGC15483, PSDP, bA6J24.6
Gene Description	phosphatidic acid phosphatase type 2 domain containing 2
Omim ID	<a href="#">611666</a>
Gene Ontology	<a href="#">Hyperlink</a>
Other Designations	OTTHUMP00000021003 presqualene diphosphate