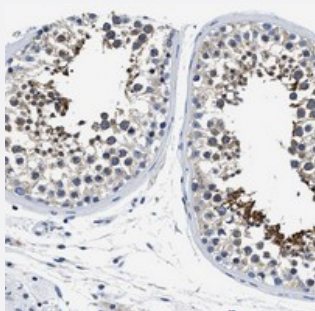


# MEA1 polyclonal antibody

Catalog # PAB20978      Size 100 uL

## Applications



### Immunohistochemistry (Formalin/PFA-fixed paraffin-embedded sections)

Immunohistochemical staining of human testis with MEA1 polyclonal antibody (Cat # PAB20978) shows cytoplasmic positivity in seminiferous ducts at 1:20-1:50 dilution.

## Specification

<b>Product Description</b>	Rabbit polyclonal antibody raised against recombinant MEA1.
<b>Immunogen</b>	Recombinant protein corresponding to amino acids of human MEA1.
<b>Sequence</b>	ALNNHSSIPMDPEHVELVKRTMAGVSLPAPGVPAWAREISDAQWEDVVQKALQARQAS
<b>Host</b>	Rabbit
<b>Reactivity</b>	Human
<b>Form</b>	Liquid
<b>Purification</b>	Antigen affinity purification
<b>Isotype</b>	IgG
<b>Recommend Usage</b>	Immunohistochemistry (1:20-1:50) Western Blot (1:250-1:500) The optimal working dilution should be determined by the end user.
<b>Storage Buffer</b>	In PBS, pH 7.2 (40% glycerol, 0.02% sodium azide)

**Storage Instruction**

Store at 4°C. For long term storage store at -20°C.  
Aliquot to avoid repeated freezing and thawing.

**Note**

This product contains sodium azide: a POISONOUS AND HAZARDOUS SUBSTANCE which should be handled by trained staff only.

## Applications

- Western Blot
- Immunohistochemistry (Formalin/PFA-fixed paraffin-embedded sections)

Immunohistochemical staining of human testis with MEA1 polyclonal antibody (Cat # PAB20978) shows cytoplasmic positivity in seminiferous ducts at 1:20-1:50 dilution.

## Gene Info — MEA1

Entrez GeneID	<a href="#">4201</a>
Protein Accession#	<a href="#">Q16626</a>
Gene Name	MEA1
Gene Alias	HYS, MEA
Gene Description	male-enhanced antigen 1
Omim ID	<a href="#">143170</a>
Gene Ontology	<a href="#">Hyperlink</a>
Other Designations	Male-enhanced antigen (H-Y structural gene) OTTHUMP00000039819 male-enhanced antigen