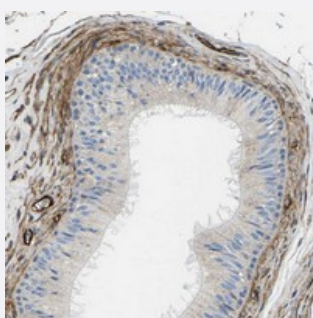


# COL15A1 polyclonal antibody

Catalog # PAB20976      Size 100 uL

## Applications



### Immunohistochemistry (Formalin/PFA-fixed paraffin-embedded sections)

Immunohistochemical staining of human epididymis with COL15A1 polyclonal antibody (Cat # PAB20976) shows distinct positivity of collagen fibers and endothelial cells in the stroma at 1:200-1:500 dilution.

## Specification

Product Description	Rabbit polyclonal antibody raised against recombinant COL15A1.
Immunogen	Recombinant protein corresponding to amino acids of human COL15A1.
Sequence	RSSQALAFESSAGIFMGNAGATGLERFTGSLQQLTVHPDPRTPEELCDPEESSASGETSGLQEA DGVAEILEAVTYTQASPKEAKVEPINTPPTPSSPFEDMELSGEPVPE
Host	Rabbit
Reactivity	Human
Form	Liquid
Purification	Antigen affinity purification
Isotype	IgG
Recommend Usage	Immunohistochemistry (1:200-1:500) The optimal working dilution should be determined by the end user.
Storage Buffer	In PBS, pH 7.2 (40% glycerol, 0.02% sodium azide)

**Storage Instruction**

Store at 4°C. For long term storage store at -20°C.  
Aliquot to avoid repeated freezing and thawing.

**Note**

This product contains sodium azide: a POISONOUS AND HAZARDOUS SUBSTANCE which should be handled by trained staff only.

## Applications

- Immunohistochemistry (Formalin/PFA-fixed paraffin-embedded sections)

Immunohistochemical staining of human epididymis with COL15A1 polyclonal antibody (Cat # PAB20976) shows distinct positivity of collagen fibers and endothelial cells in the stroma at 1:200-1:500 dilution.

## Gene Info — COL15A1

**Entrez GeneID**[1306](#)**Protein Accession#**[P39059](#)**Gene Name**

COL15A1

**Gene Alias**

FLJ38566

**Gene Description**

collagen, type XV, alpha 1

**Omim ID**[120325](#)**Gene Ontology**[Hyperlink](#)**Gene Summary**

This gene encodes the alpha chain of type XV collagen, a member of the FACIT collagen family (fibril-associated collagens with interrupted helices). Type XV collagen has a wide tissue distribution but the strongest expression is localized to basement membrane zones so it may function to adhere basement membranes to underlying connective tissue stroma. Mouse studies have shown that collagen XV deficiency is associated with muscle and microvessel deterioration. [provided by RefSeq]

**Other Designations**

OTTHUMP00000063794|alpha 1 type XV collagen|collagen XV, alpha-1 polypeptide|collagen type XV proteoglycan

## Disease

- [Genetic Predisposition to Disease](#)
- [Scleroderma](#)