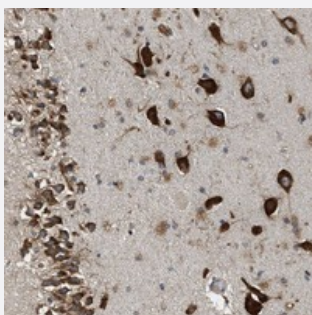


SLC36A4 polyclonal antibody

Catalog # PAB20973 Size 100 uL

Applications



Immunohistochemistry (Formalin/PFA-fixed paraffin-embedded sections)

Immunohistochemical staining of human hippocampus with SLC36A4 polyclonal antibody (Cat # PAB20973) shows strong cytoplasmic positivity in neuronal cells.

Specification

Product Description	Rabbit polyclonal antibody raised against recombinant SLC36A4.
Immunogen	Recombinant protein corresponding to amino acids of human SLC36A4.
Sequence	REELDMDVMRPLINEQNF DGTSDEEHEQE LLPVQKH YQLDDQEGISFVQ TLMHLLKGNIGTGL
Host	Rabbit
Reactivity	Human
Form	Liquid
Purification	Antigen affinity purification
Isotype	IgG
Recommend Usage	Immunohistochemistry (1:200-1:500) The optimal working dilution should be determined by the end user.
Storage Buffer	In PBS, pH 7.2 (40% glycerol, 0.02% sodium azide)
Storage Instruction	Store at 4°C. For long term storage store at -20°C. Aliquot to avoid repeated freezing and thawing.

Note

This product contains sodium azide: a POISONOUS AND HAZARDOUS SUBSTANCE which should be handled by trained staff only.

Applications

- Immunohistochemistry (Formalin/PFA-fixed paraffin-embedded sections)

Immunohistochemical staining of human hippocampus with SLC36A4 polyclonal antibody (Cat # PAB20973) shows strong cytoplasmic positivity in neuronal cells.

Gene Info — SLC36A4

Entrez GeneID [120103](#)

Protein Accession# [Q6YBV0](#)

Gene Name SLC36A4

Gene Alias FLJ38932, PAT4

Gene Description solute carrier family 36 (proton/amino acid symporter), member 4

Gene Ontology [Hyperlink](#)

Gene Summary O

Other Designations proton/amino acid transporter 4