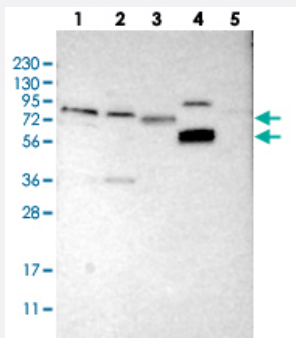


FRRS1 polyclonal antibody

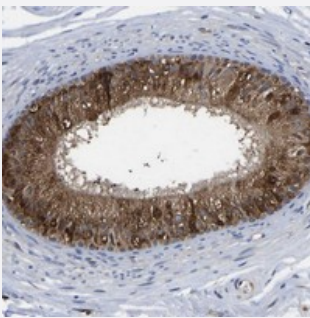
Catalog # PAB20970 Size 100 uL

Applications



Western Blot

Western blot analysis of Lane 1: RT-4, Lane 2: U-251 MG, Lane 3: Human Plasma, Lane 4: Liver, Lane 5: Tonsil with FRRS1 polyclonal antibody (Cat # PAB20970).



Immunohistochemistry (Formalin/PFA-fixed paraffin-embedded sections)

Immunohistochemical staining of human epididymis with FRRS1 polyclonal antibody (Cat # PAB20970) strong cytoplasmic positivity in glandular cells.

Specification

Product Description	Rabbit polyclonal antibody raised against recombinant FRRS1.
Immunogen	Recombinant protein corresponding to amino acids of human FRRS1.
Sequence	SHLT KPFSASDCGNKKFCIR SPLNCDPEKEASC VFLSFT RDDQSVMVEMSGPSKGYLSFALSHD QWMGDDDDAYLCIHEDQTVYIQPSHLTGR SHPVMDSRDTLEDMAWRLADGVMQCSFRRNITLPGV KNRFDLNTSYIFLADGAANDG
Host	Rabbit
Reactivity	Human
Form	Liquid

Purification	Antigen affinity purification
Isotype	IgG
Recommend Usage	Immunohistochemistry (1:50-1:200) Western Blot (1:250-1:500) The optimal working dilution should be determined by the end user.
Storage Buffer	In PBS, pH 7.2 (40% glycerol, 0.02% sodium azide)
Storage Instruction	Store at 4°C. For long term storage store at -20°C. Aliquot to avoid repeated freezing and thawing.
Note	This product contains sodium azide: a POISONOUS AND HAZARDOUS SUBSTANCE which should be handled by trained staff only.

Applications

- Western Blot

Western blot analysis of Lane 1: RT-4, Lane 2: U-251 MG, Lane 3: Human Plasma, Lane 4: Liver, Lane 5: Tonsil with FRRS1 polyclonal antibody (Cat # PAB20970).

- Immunohistochemistry (Formalin/PFA-fixed paraffin-embedded sections)

Immunohistochemical staining of human epididymis with FRRS1 polyclonal antibody (Cat # PAB20970) strong cytoplasmic positivity in glandular cells.

Gene Info — FRRS1

Entrez GeneID	391059
Protein Accession#	Q6ZNA5
Gene Name	FRRS1
Gene Alias	SDFR2, SDR2
Gene Description	ferric-chelate reductase 1
Omim ID	611578
Gene Ontology	Hyperlink
Gene Summary	Members of the cytochrome b561 (CYB561; MIM 600019) family, including FRRS1, reduce ferric to ferrous iron before its transport from the endosome to the cytoplasm (Vargas et al., 2003 [PubMed 14499595]).[supplied by OMIM]

Other Designations

stromal cell derived factor receptor 2 homolog

Disease

- [Tobacco Use Disorder](#)