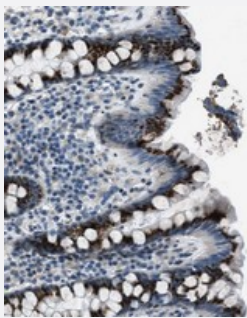


GPC6 polyclonal antibody

Catalog # PAB20952 Size 100 uL

Applications



Immunohistochemistry (Formalin/PFA-fixed paraffin-embedded sections)

Immunohistochemical staining of human colon with GPC6 polyclonal antibody (Cat # PAB20952) shows strong positivity in granular pattern in glandular cells.

Specification

Product Description	Rabbit polyclonal antibody raised against recombinant GPC6.
Immunogen	Recombinant protein corresponding to amino acids of human GPC6.
Sequence	KGFSLADIPYQEIAGEHLRCPQEYTCCTTEMEDKLSQQSKLEFENLVEETSHFVRTTFVSRHKKF DEFFRELLENAEK
Host	Rabbit
Reactivity	Human
Form	Liquid
Purification	Antigen affinity purification
Isotype	IgG
Recommend Usage	Immunohistochemistry (1:50-1:200) The optimal working dilution should be determined by the end user.
Storage Buffer	In PBS, pH 7.2 (40% glycerol, 0.02% sodium azide)

Storage Instruction

Store at 4°C. For long term storage store at -20°C.
Aliquot to avoid repeated freezing and thawing.

Note

This product contains sodium azide: a POISONOUS AND HAZARDOUS SUBSTANCE which should be handled by trained staff only.

Applications

- Immunohistochemistry (Formalin/PFA-fixed paraffin-embedded sections)

Immunohistochemical staining of human colon with GPC6 polyclonal antibody (Cat # PAB20952) shows strong positivity in granular pattern in glandular cells.

Gene Info — GPC6

Entrez GeneID [10082](#)

Protein Accession# [Q9Y625](#)

Gene Name GPC6

Gene Alias MGC126288

Gene Description glypican 6

Omim ID [604404](#)

Gene Ontology [Hyperlink](#)

Gene Summary The glypicans comprise a family of glycosylphosphatidylinositol-anchored heparan sulfate proteoglycans, and they have been implicated in the control of cell growth and cell division. The glypican encoded by this gene is a putative cell surface coreceptor for growth factors, extracellular matrix proteins, proteases and anti-proteases. [provided by RefSeq]

Other Designations OTTHUMP00000018552|bA158B14.1 (glypican 6)|bA62D23.1 (glypican 6)|bA632L2.2 (glypican 6)|glypican proteoglycan 6

Disease

- [Genetic Predisposition to Disease](#)
- [Multiple Sclerosis](#)
- [Neurotic Disorders](#)

- [Tobacco Use Disorder](#)