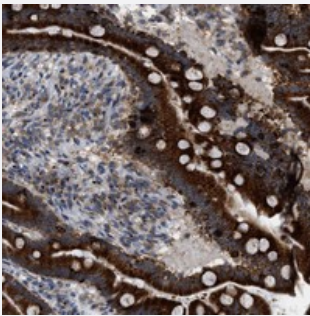


FAM69A polyclonal antibody

Catalog # PAB20932 Size 100 uL

Applications



Immunohistochemistry (Formalin/PFA-fixed paraffin-embedded sections)

Immunohistochemical staining of human duodenum with FAM69A polyclonal antibody (Cat # PAB20932) shows strong positivity in glandular cells.

Specification

Product Description	Rabbit polyclonal antibody raised against recombinant FAM69A.
Immunogen	Recombinant protein corresponding to amino acids of human FAM69A.
Sequence	IICDKYKTGVIDGPACNSLCVTETLYFGKCLSTKPNNQMYLGWDNLPGVVKCQMEQALHLDGTE LEPRKEIVLFDKPTRGTTVQKFKEMVYSLFKAKLGDQGNLSELVNLILTVADGDKDGQVSLGEAK SAWA
Host	Rabbit
Reactivity	Human
Form	Liquid
Purification	Antigen affinity purification
Isotype	IgG
Recommend Usage	Immunohistochemistry (1:50-1:200) The optimal working dilution should be determined by the end user.
Storage Buffer	In PBS, pH 7.2 (40% glycerol, 0.02% sodium azide)

Storage Instruction

Store at 4°C. For long term storage store at -20°C.
Aliquot to avoid repeated freezing and thawing.

Note

This product contains sodium azide: a POISONOUS AND HAZARDOUS SUBSTANCE which should be handled by trained staff only.

Applications

- Immunohistochemistry (Formalin/PFA-fixed paraffin-embedded sections)

Immunohistochemical staining of human duodenum with FAM69A polyclonal antibody (Cat # PAB20932) shows strong positivity in glandular cells.

Gene Info — FAM69A

Entrez GeneID [388650](#)

Protein Accession# [Q5T7M9](#)

Gene Name FAM69A

Gene Alias FLJ23493

Gene Description family with sequence similarity 69, member A

Gene Ontology [Hyperlink](#)

Gene Summary This gene may encode a transmembrane protein. Transcript variants of this gene may exist, but their full-length natures have not been determined. [provided by RefSeq]

Other Designations hypothetical protein LOC388650

Disease

- [Genetic Predisposition to Disease](#)
- [Multiple Sclerosis](#)