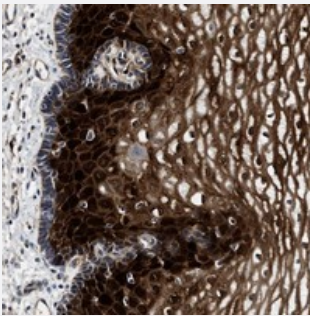


CRABP1 polyclonal antibody

Catalog # PAB20926 Size 100 uL

Applications



Immunohistochemistry (Formalin/PFA-fixed paraffin-embedded sections)

Immunohistochemical staining of human esophagus with CRABP1 polyclonal antibody (Cat # PAB20926) shows strong cytoplasmic positivity in squamous epithelial cells.

Specification

Product Description	Rabbit polyclonal antibody raised against recombinant CRABP1.
Immunogen	Recombinant protein corresponding to amino acids of human CRABP1.
Sequence	QFYIKTSTTVRTTEINFKVGEGFEEETVDGRKCRSLATWENENKIHCTQTLLEGDPKTYWTRELA NDELILTFGADDVVCTRIYRE
Host	Rabbit
Reactivity	Human
Form	Liquid
Purification	Antigen affinity purification
Isotype	IgG
Recommend Usage	Immunohistochemistry (1:50-1:200) The optimal working dilution should be determined by the end user.
Storage Buffer	In PBS, pH 7.2 (40% glycerol, 0.02% sodium azide)

Storage Instruction

Store at 4°C. For long term storage store at -20°C.
Aliquot to avoid repeated freezing and thawing.

Note

This product contains sodium azide: a POISONOUS AND HAZARDOUS SUBSTANCE which should be handled by trained staff only.

Applications

- Immunohistochemistry (Formalin/PFA-fixed paraffin-embedded sections)

Immunohistochemical staining of human esophagus with CRABP1 polyclonal antibody (Cat # PAB20926) shows strong cytoplasmic positivity in squamous epithelial cells.

Gene Info — CRABP1

Entrez GeneID[1381](#)**Protein Accession#**[P29762](#)**Gene Name**

CRABP1

Gene Alias

CRABP, CRABP-I, CRABPI, RBP5

Gene Description

cellular retinoic acid binding protein 1

Omim ID[180230](#)**Gene Ontology**[Hyperlink](#)**Gene Summary**

This gene encodes a specific binding protein for a vitamin A family member and is thought to play an important role in retinoic acid-mediated differentiation and proliferation processes. It is structurally similar to the cellular retinol-binding proteins, but binds only retinoic acid at specific sites within the nucleus, which may contribute to vitamin A-directed differentiation in epithelial tissue. [provided by RefSeq]

Other Designations

cellular retinoic acid-binding protein 1

Disease

- [Cleft Lip](#)
- [Cleft Palate](#)
- [Genetic Predisposition to Disease](#)

- [Meningomyelocele](#)