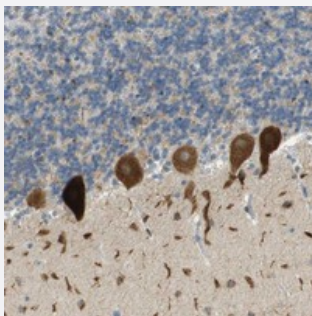


# PLBD2 polyclonal antibody

Catalog # PAB20924      Size 100 uL

## Applications



### Immunohistochemistry (Formalin/PFA-fixed paraffin-embedded sections)

Immunohistochemical staining of human cerebellum with PLBD2 polyclonal antibody (Cat # PAB20924) shows strong cytoplasmic positivity in Purkinje cells.

## Specification

Product Description	Rabbit polyclonal antibody raised against recombinant PLBD2.
Immunogen	Recombinant protein corresponding to amino acids of human PLBD2.
Sequence	GDWFSYDGSPPRAQIFRRNQSLVQDMDSMVRLMRYNDFLHDPLSLCKACNPQPNGENAIARS DLNPANGSYFPQALRQRSHGGIDVKVTMSLARILSLAASGPTWDQVPPFQWSTS
Host	Rabbit
Reactivity	Human
Form	Liquid
Purification	Antigen affinity purification
Isotype	IgG
Recommend Usage	Immunohistochemistry (1:200-1:500) The optimal working dilution should be determined by the end user.
Storage Buffer	In PBS, pH 7.2 (40% glycerol, 0.02% sodium azide)

**Storage Instruction**

Store at 4°C. For long term storage store at -20°C.  
Aliquot to avoid repeated freezing and thawing.

**Note**

This product contains sodium azide: a POISONOUS AND HAZARDOUS SUBSTANCE which should be handled by trained staff only.

## Applications

- Immunohistochemistry (Formalin/PFA-fixed paraffin-embedded sections)

Immunohistochemical staining of human cerebellum with PLBD2 polyclonal antibody (Cat # PAB20924) shows strong cytoplasmic positivity in purkinje cells.

## Gene Info — PLBD2

**Entrez GeneID**[196463](#)**Protein Accession#**[Q8NHP8](#)**Gene Name**

PLBD2

**Gene Alias**

-

**Gene Description**

mannose-6-phosphate protein p76

**Gene Ontology**[Hyperlink](#)**Other Designations**

-