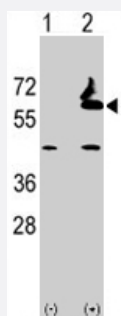


# FUCA2 polyclonal antibody

Catalog # PAB2090

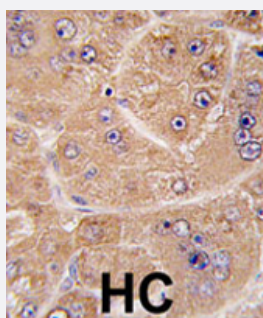
Size 400 uL

## Applications



### Western Blot (Transfected lysate)

Western blot analysis of FUCA2 (arrow) using FUCA2 polyclonal antibody (Cat # PAB2090). 293 cell lysates (2 ug/lane) either nontransfected (Lane 1) or transiently transfected with the FUCA2 gene (Lane 2) (Origene Technologies).



### Immunohistochemistry (Formalin/PFA-fixed paraffin-embedded sections)

Formalin-fixed and paraffin-embedded human hepatocellular carcinoma reacted with FUCA2 polyclonal antibody (Cat # PAB2090) , which was peroxidase-conjugated to the secondary antibody, followed by DAB staining.

This data demonstrates the use of this antibody for immunohistochemistry ; clinical relevance has not been evaluated.

## Specification

<b>Product Description</b>	Rabbit polyclonal antibody raised against synthetic peptide of FUCA2.
<b>Immunogen</b>	A synthetic peptide (conjugated with KLH) corresponding to N-terminus of human FUCA2.
<b>Host</b>	Rabbit
<b>Reactivity</b>	Human
<b>Form</b>	Liquid
<b>Purification</b>	Protein A purification

<b>Recommend Usage</b>	Western Blot (1:1000) Immunohistochemistry (1:10-50) The optimal working dilution should be determined by the end user.
<b>Storage Buffer</b>	In PBS (0.09% sodium azide)
<b>Storage Instruction</b>	Store at 4°C. For long term storage store at -20°C. Aliquot to avoid repeated freezing and thawing.
<b>Note</b>	This product contains sodium azide: a POISONOUS AND HAZARDOUS SUBSTANCE which should be handled by trained staff only.

## Applications

- Western Blot (Transfected lysate)

Western blot analysis of FUCA2 (arrow) using FUCA2 polyclonal antibody (Cat # PAB2090). 293 cell lysates (2 ug/lane) either nontransfected (Lane 1) or transiently transfected with the FUCA2 gene (Lane 2) (Origene Technologies).

- Immunohistochemistry (Formalin/PFA-fixed paraffin-embedded sections)

Formalin-fixed and paraffin-embedded human hepatocellular carcinoma reacted with FUCA2 polyclonal antibody (Cat # PAB2090), which was peroxidase-conjugated to the secondary antibody, followed by DAB staining.

This data demonstrates the use of this antibody for immunohistochemistry; clinical relevance has not been evaluated.

## Gene Info — FUCA2

<b>Entrez GeneID</b>	<a href="#">2519</a>
<b>Protein Accession#</b>	<a href="#">NP_114409;Q9BTY2</a>
<b>Gene Name</b>	FUCA2
<b>Gene Alias</b>	MGC1314, dJ20N2.5
<b>Gene Description</b>	fucosidase, alpha-L- 2, plasma
<b>Omim ID</b>	<a href="#">136820</a>
<b>Gene Ontology</b>	<a href="#">Hyperlink</a>
<b>Gene Summary</b>	alpha-L- 2
<b>Other Designations</b>	OTTHUMP00000017331

## Publication Reference

- [The secreted protein discovery initiative \(SPDI\), a large-scale effort to identify novel human secreted and transmembrane proteins: a bioinformatics assessment.](#)

Clark HF, Gurney AL, Abaya E, Baker K, Baldwin D, Brush J, Chen J, Chow B, Chui C, Crowley C, Currell B, Deuel B, Dowd P, Eaton D, Foster J, Grimaldi C, Gu Q, Hass PE, Heldens S, Huang A, Kim HS, Klimowski L, Jin Y, Johnson S, Lee J, Lewis L, Liao D, Mark M, Robbie E, Sanchez C, Schoenfeld J, Seshagiri S, Simmons L, Singh J, Smith V, Stinson J, Vagts A, Vandlen R, Watanabe C, Wieand D, Woods K, Xie MH, Yansura D, Yi S, Yu G, Yuan J, Zhang M, Zhang Z, Goddard A, Wood WI, Godowski P, Gray A.

Genome Research 2003 Sep; 13(10):2265.

- [Linkage of plasma alpha-L-fucosidase \(FUCA2\) and the plasminogen \(PLG\) system.](#)

Eiberg H, Mohr J, Nielsen LS.

Clinical Genetics 1984 Jul; 26(1):23.

## Pathway

- [Other glycan degradation](#)