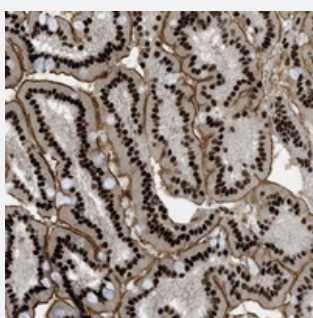


ZFR polyclonal antibody

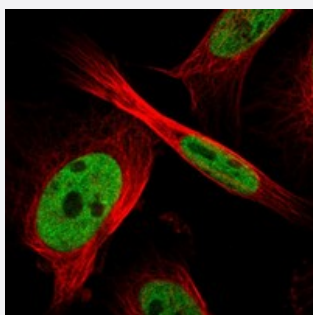
Catalog # PAB20896 Size 100 uL

Applications



Immunohistochemistry (Formalin/PFA-fixed paraffin-embedded sections)

Immunohistochemical staining of human duodenum with ZFR polyclonal antibody (Cat # PAB20896) shows strong nuclear and membranous positivity in glandular cells at 1:10-1:20 dilution.



Immunofluorescence

Immunofluorescent staining of human cell line U-251 MG with ZFR polyclonal antibody (Cat # PAB20896) at 1-4 ug/mL dilution shows positivity in nuclei but not nucleoli.

Specification

Product Description	Rabbit polyclonal antibody raised against recombinant ZFR.
Immunogen	Recombinant protein corresponding to amino acids of human ZFR.
Sequence	NCTVNTSSATSSMKGLTTTGNSSLNSTSNTKVSAVPTNMAAKKTSTPKINFVGGNKLQSTGNKAE DIKGTECVKSTPVTSAVQIPEVKQDTVSEPVTPASLAALQSDVQPV
Host	Rabbit
Reactivity	Human
Form	Liquid

Purification	Antigen affinity purification
Isotype	IgG
Recommend Usage	Immunohistochemistry (1:10-1:20) Western Blot (1:250-1:500) Immunofluorescence (1-4 ug/mL) The optimal working dilution should be determined by the end user.
Storage Buffer	In PBS, pH 7.2 (40% glycerol, 0.02% sodium azide)
Storage Instruction	Store at 4°C. For long term storage store at -20°C. Aliquot to avoid repeated freezing and thawing.
Note	This product contains sodium azide: a POISONOUS AND HAZARDOUS SUBSTANCE which should be handled by trained staff only.

Applications

- Western Blot
- Immunohistochemistry (Formalin/PFA-fixed paraffin-embedded sections)
Immunohistochemical staining of human duodenum with ZFR polyclonal antibody (Cat # PAB20896) shows strong nuclear and membranous positivity in glandular cells at 1:10-1:20 dilution.
- Immunofluorescence
Immunofluorescent staining of human cell line U-251 MG with ZFR polyclonal antibody (Cat # PAB20896) at 1-4 ug/mL dilution shows positivity in nuclei but not nucleoli.

Gene Info — ZFR

Entrez GeneID	51663
Protein Accession#	Q96KR1
Gene Name	ZFR
Gene Alias	FLJ41312, ZFR1
Gene Description	zinc finger RNA binding protein
Gene Ontology	Hyperlink
Other Designations	M-phase phosphoprotein homolog