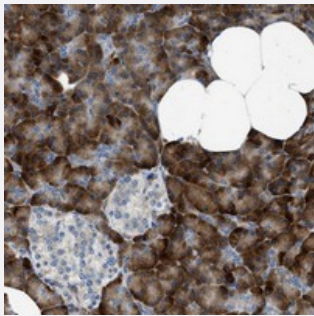


CNTN6 polyclonal antibody

Catalog # PAB20895 Size 100 uL

Applications



Immunohistochemistry (Formalin/PFA-fixed paraffin-embedded sections)

Immunohistochemical staining of human pancreas with CNTN6 polyclonal antibody (Cat # PAB20895) shows strong cytoplasmic positivity in exocrine glandular cells at 1:50-1:200 dilution.

Specification

Product Description	Rabbit polyclonal antibody raised against recombinant CNTN6.
Immunogen	Recombinant protein corresponding to amino acids of human CNTN6.
Sequence	TQEPHDVIFPLDLKSEVILNCAANGYSPHYRWKQNGTDIDFTMSYHYRLDGGSLAINSPHTDQDI GMVQCLATNLLGTILSRKAKLQF
Host	Rabbit
Reactivity	Human
Form	Liquid
Purification	Antigen affinity purification
Isotype	IgG
Recommend Usage	Immunohistochemistry (1:50-1:200) The optimal working dilution should be determined by the end user.
Storage Buffer	In PBS, pH 7.2 (40% glycerol, 0.02% sodium azide)

Storage Instruction

Store at 4°C. For long term storage store at -20°C.
Aliquot to avoid repeated freezing and thawing.

Note

This product contains sodium azide: a POISONOUS AND HAZARDOUS SUBSTANCE which should be handled by trained staff only.

Applications

- Immunohistochemistry (Formalin/PFA-fixed paraffin-embedded sections)

Immunohistochemical staining of human pancreas with CNTN6 polyclonal antibody (Cat # PAB20895) shows strong cytoplasmic positivity in exocrine glandular cells at 1:50-1:200 dilution.

Gene Info — CNTN6

Entrez GeneID [27255](#)

Protein Accession# [Q9UQ52](#)

Gene Name CNTN6

Gene Alias MGC133256, NB3

Gene Description contactin 6

Omim ID [607220](#)

Gene Ontology [Hyperlink](#)

Gene Summary The protein encoded by this gene is a member of the immunoglobulin superfamily. It is a glycosylphosphatidylinositol (GPI)-anchored neuronal membrane protein that functions as a cell adhesion molecule. It may play a role in the formation of axon connections in the developing nervous system . [provided by RefSeq]

Other Designations OTTHUMP00000147565|neural adhesion molecule

Disease

- [Genetic Predisposition to Disease](#)
- [Mental Disorders](#)
- [Tobacco Use Disorder](#)