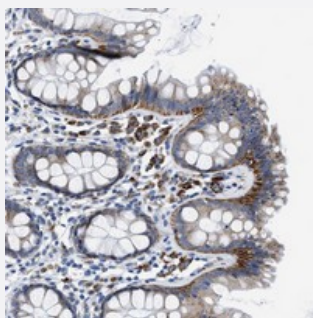


# ZDHC3 polyclonal antibody

Catalog # PAB20891      Size 100 uL

## Applications



### Immunohistochemistry (Formalin/PFA-fixed paraffin-embedded sections)

Immunohistochemical staining of human colon with ZDHC3 polyclonal antibody (Cat # PAB20891) shows cytoplasmic positivity in glandular cells at 1:50-1:200 dilution.

## Specification

<b>Product Description</b>	Rabbit polyclonal antibody raised against recombinant ZDHC3.
<b>Immunogen</b>	Recombinant protein corresponding to amino acids of human ZDHC3.
<b>Sequence</b>	FLHCFEEDWTTYGLNREEMAETGISLHEKMQPLNFSSTECSSFSPPTT
<b>Host</b>	Rabbit
<b>Reactivity</b>	Human
<b>Form</b>	Liquid
<b>Purification</b>	Antigen affinity purification
<b>Isotype</b>	IgG
<b>Recommend Usage</b>	Immunohistochemistry (1:50-1:200) The optimal working dilution should be determined by the end user.
<b>Storage Buffer</b>	In PBS, pH 7.2 (40% glycerol, 0.02% sodium azide)
<b>Storage Instruction</b>	Store at 4°C. For long term storage store at -20°C. Aliquot to avoid repeated freezing and thawing.

**Note**

This product contains sodium azide: a POISONOUS AND HAZARDOUS SUBSTANCE which should be handled by trained staff only.

## Applications

- Immunohistochemistry (Formalin/PFA-fixed paraffin-embedded sections)

Immunohistochemical staining of human colon with ZDHHC3 polyclonal antibody (Cat # PAB20891) shows cytoplasmic positivity in glandular cells at 1:50-1:200 dilution.

## Gene Info — ZDHHC3

**Entrez GeneID** [51304](#)

**Protein Accession#** [Q9NYG2](#)

**Gene Name** ZDHHC3

**Gene Alias** DKFZp313D2314, FLJ20209, FLJ45940, GODZ, ZNF373

**Gene Description** zinc finger, DHHC-type containing 3

**Gene Ontology** [Hyperlink](#)

**Gene Summary** O

**Other Designations** DHHC1 protein|Golgi apparatus-specific protein with DHHC zinc finger domain|zinc finger, DHHC domain containing 3