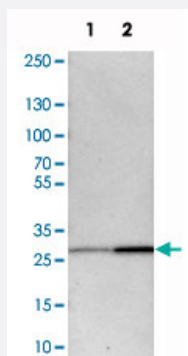


BPGM polyclonal antibody

Catalog # PAB20877 Size 100 uL

Applications

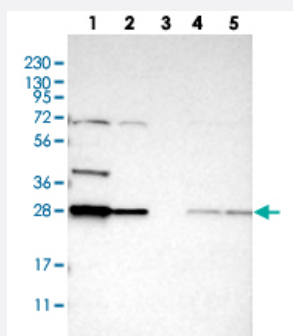


Western Blot (Cell lysate)

Western blot analysis of cell lysates with BPGM polyclonal antibody (Cat # PAB20877) at 1:250-1:500 dilution.

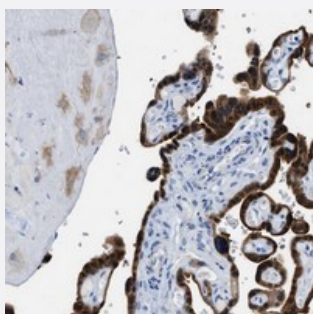
Lane 1 : NIH/3T3

Lane 2 : NBT-II



Western Blot

Western blot analysis of Lane 1: RT-4, Lane 2: U-251 MG, Lane 3: Human Plasma, Lane 4: Liver, Lane 5: Tonsil with BPGM polyclonal antibody (Cat # PAB20877) at 1:250-1:500 dilution.



Immunohistochemistry (Formalin/PFA-fixed paraffin-embedded sections)

Immunohistochemical staining of human placenta with BPGM polyclonal antibody (Cat # PAB20877) shows strong cytoplasmic positivity in trophoblastic cells at 1:50-1:200 dilution.

Specification

Product Description

Rabbit polyclonal antibody raised against recombinant BPGM.

Immunogen	Recombinant protein corresponding to amino acids of human BPGM.
Sequence	RRSYNVTPPPIEESHPIYYQEIMNDRRYKVC DVPLDQLPRSESLKDVLERLLPYWNERIAPEVLRGK TILISAHGNSSRALLKHLEGISDEDIINITLPTGVPILLELDENLRAVGPHQFLGDQEA IQAAIKKVEDQ GKVKQA
Host	Rabbit
Reactivity	Human, Mouse, Rat
Form	Liquid
Purification	Antigen affinity purification
Isotype	IgG
Recommend Usage	Immunohistochemistry (1:50-1:200) Western Blot (1:250-1:500) The optimal working dilution should be determined by the end user.
Storage Buffer	In PBS, pH 7.2 (40% glycerol, 0.02% sodium azide)
Storage Instruction	Store at 4°C. For long term storage store at -20°C. Aliquot to avoid repeated freezing and thawing.
Note	This product contains sodium azide: a POISONOUS AND HAZARDOUS SUBSTANCE which should be handled by trained staff only.

Applications

- Western Blot (Cell lysate)

Western blot analysis of cell lysates with BPGM polyclonal antibody (Cat # PAB20877) at 1:250-1:500 dilution.

Lane 1 : NIH/3T3

Lane 2 : NBT-II

- Western Blot

Western blot analysis of Lane 1: RT-4, Lane 2: U-251 MG, Lane 3: Human Plasma, Lane 4: Liver, Lane 5: Tonsil with BPGM polyclonal antibody (Cat # PAB20877) at 1:250-1:500 dilution.

- Immunohistochemistry (Formalin/PFA-fixed paraffin-embedded sections)

Immunohistochemical staining of human placenta with BPGM polyclonal antibody (Cat # PAB20877) shows strong cytoplasmic positivity in trophoblastic cells at 1:50-1:200 dilution.

Gene Info — BPGM

Entrez GeneID	669
Protein Accession#	P07738
Gene Name	BPGM
Gene Alias	-
Gene Description	2,3-bisphosphoglycerate mutase
Omim ID	222800
Gene Ontology	Hyperlink
Gene Summary	<p>2,3-diphosphoglycerate (2,3-DPG) is a small molecule found at high concentrations in red blood cells where it binds to and decreases the oxygen affinity of hemoglobin. This gene encodes a multifunctional enzyme that catalyzes 2,3-DPG synthesis via its synthetase activity, and 2,3-DPG degradation via its phosphatase activity. The enzyme also has phosphoglycerate phosphomutase activity. Deficiency of this enzyme increases the affinity of cells for oxygen. Mutations in this gene result in hemolytic anemia. Multiple alternatively spliced variants, encoding the same protein, have been identified. [provided by RefSeq]</p>
Other Designations	-

Pathway

- [Biosynthesis of phenylpropanoids](#)
- [Glycolysis / Gluconeogenesis](#)
- [Metabolic pathways](#)