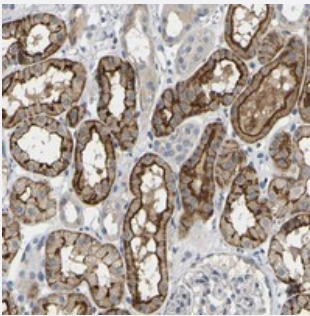


FAM176C polyclonal antibody

Catalog # PAB20840 Size 100 uL

Applications



Immunohistochemistry (Formalin/PFA-fixed paraffin-embedded sections)

Immunohistochemical staining of human kidney with FAM176C polyclonal antibody (Cat # PAB20840) shows strong luminal membrane and cytoplasmic positivity in cells in tubules at 1:20-1:50 dilution.

Specification

Product Description	Rabbit polyclonal antibody raised against recombinant FAM176C.
Immunogen	Recombinant protein corresponding to amino acids of human FAM176C.
Sequence	NKTVCEDQELKLHCHESKFLNIYSATYGRRTQERDICSSKAERLPPFDCLSYSALQVLSRRCYGK QRCKIIVNNHHFGSPCLPGVKKYLTVTYACVPKNILTAIDPAIANLKPSLKQKDGEYGINFDPGSKV LRKDGILVSNLSLA
Host	Rabbit
Reactivity	Human
Form	Liquid
Purification	Antigen affinity purification
Isotype	IgG
Recommend Usage	Immunohistochemistry (1:20-1:50) The optimal working dilution should be determined by the end user.
Storage Buffer	In PBS, pH 7.2 (40% glycerol, 0.02% sodium azide)

Storage Instruction

Store at 4°C. For long term storage store at -20°C.
Aliquot to avoid repeated freezing and thawing.

Note

This product contains sodium azide: a POISONOUS AND HAZARDOUS SUBSTANCE which should be handled by trained staff only.

Applications

- Immunohistochemistry (Formalin/PFA-fixed paraffin-embedded sections)

Immunohistochemical staining of human kidney with FAM176C polyclonal antibody (Cat # PAB20840) shows strong luminal membrane and cytoplasmic positivity in cells in tubules at 1:20-1:50 dilution.

Gene Info — FAM176C

Entrez GeneID[59271](#)**Protein Accession#**[P58658](#)**Gene Name**

FAM176C

Gene Alias

PRED34, B18, B19, C21orf63, C21orf64, EVA-1, EVA1, SUE21

Gene Description

family with sequence similarity 176, member C

Gene Ontology[Hyperlink](#)**Gene Summary**

eva-1 homolog; protein FAM176C; uncharacterized protein C21orf63

Other Designations

eva-1 homolog; protein FAM176C; uncharacterized protein C21orf63

Disease

- [Tobacco Use Disorder](#)