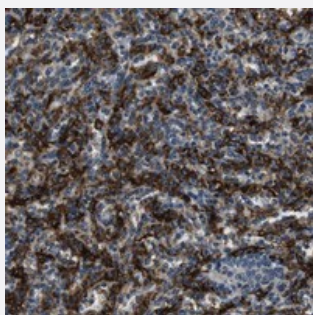


# CD163L1 polyclonal antibody

Catalog # PAB20835      Size 100 uL

## Applications



### Immunohistochemistry (Formalin/PFA-fixed paraffin-embedded sections)

Immunohistochemical staining of human spleen with CD163L1 polyclonal antibody (Cat # PAB20835) shows strong cytoplasmic positivity in cells of red pulp at 1:200-1:500 dilution.

## Specification

<b>Product Description</b>	Rabbit polyclonal antibody raised against recombinant CD163L1.
<b>Immunogen</b>	Recombinant protein corresponding to amino acids of human CD163L1.
<b>Sequence</b>	LRVSTRRRGSLEENLFHEMETCLKREDPHGTRTSDDTPNHGCEDASDTSLLGVLPASEAT
<b>Host</b>	Rabbit
<b>Reactivity</b>	Human
<b>Form</b>	Liquid
<b>Purification</b>	Antigen affinity purification
<b>Isotype</b>	IgG
<b>Recommend Usage</b>	Immunohistochemistry (1:200-1:500) The optimal working dilution should be determined by the end user.
<b>Storage Buffer</b>	In PBS, pH 7.2 (40% glycerol, 0.02% sodium azide)
<b>Storage Instruction</b>	Store at 4°C. For long term storage store at -20°C. Aliquot to avoid repeated freezing and thawing.

**Note**

This product contains sodium azide: a POISONOUS AND HAZARDOUS SUBSTANCE which should be handled by trained staff only.

## Applications

- Immunohistochemistry (Formalin/PFA-fixed paraffin-embedded sections)

Immunohistochemical staining of human spleen with CD163L1 polyclonal antibody (Cat # PAB20835) shows strong cytoplasmic positivity in cells of red pulp at 1:200-1:500 dilution.

## Gene Info — CD163L1

Entrez GeneID [283316](#)

Protein Accession# [Q9NR16](#)

Gene Name CD163L1

Gene Alias CD163B, M160

Gene Description CD163 molecule-like 1

Omim ID [606079](#)

Gene Ontology [Hyperlink](#)

**Gene Summary** This gene encodes a member of the scavenger receptor cysteine-rich (SRCR) superfamily. Members of this family are secreted or membrane-anchored proteins mainly found in cells associated with the immune system. The SRCR family is defined by a 100-110 amino acid SRCR domain, which may mediate protein-protein interaction and ligand binding. The encoded protein contains twelve SRCR domains, a transmembrane region and a cytoplasmic domain. Alternatively spliced transcript variants encoding different isoforms have been described but their full-length nature has not been determined. [provided by RefSeq]

**Other Designations** CD163 antigen B|CD163 antigen-like 1|scavenger receptor cysteine-rich type 1

## Disease

- [Tobacco Use Disorder](#)