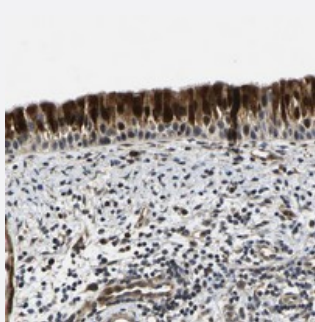


C12orf35 polyclonal antibody

Catalog # PAB20826 Size 100 uL

Applications



Immunohistochemistry (Formalin/PFA-fixed paraffin-embedded sections)

Immunohistochemical staining of human nasopharynx with C12orf35 polyclonal antibody (Cat # PAB20826) shows strong nuclear and cytoplasmic positivity in respiratory epithelial cells.

Specification

Product Description	Rabbit polyclonal antibody raised against recombinant C12orf35.
Immunogen	Recombinant protein corresponding to amino acids of human C12orf35.
Sequence	KEALSNKASKKICVKNVPCDSEHMRPSKLAVQVESCCKSNEKHSSGVQTSKESLNGLTSHGKN LKIHHQSQESKTYNLRNVKEKVGGKQPDKIWDKTKLDKLTNISNEAQFSQMPPQVKDQKKLYLNRV GFKCTERE
Host	Rabbit
Reactivity	Human
Form	Liquid
Purification	Antigen affinity purification
Isotype	IgG
Recommend Usage	Immunohistochemistry (1:50-1:200) The optimal working dilution should be determined by the end user.
Storage Buffer	In PBS, pH 7.2 (40% glycerol, 0.02% sodium azide)

Storage Instruction

Store at 4°C. For long term storage store at -20°C.
Aliquot to avoid repeated freezing and thawing.

Note

This product contains sodium azide: a POISONOUS AND HAZARDOUS SUBSTANCE which should be handled by trained staff only.

Applications

- Immunohistochemistry (Formalin/PFA-fixed paraffin-embedded sections)

Immunohistochemical staining of human nasopharynx with C12orf35 polyclonal antibody (Cat # PAB20826) shows strong nuclear and cytoplasmic positivity in respiratory epithelial cells.

Gene Info — C12orf35

Entrez GeneID[55196](#)**Protein Accession#**[Q9HCM1](#)**Gene Name**

C12orf35

Gene Alias

FLJ10652, FLJ20696

Gene Description

chromosome 12 open reading frame 35

Gene Ontology[Hyperlink](#)**Other Designations**

OTTHUMP00000158617|hypothetical protein LOC55196

Disease

- [Tobacco Use Disorder](#)