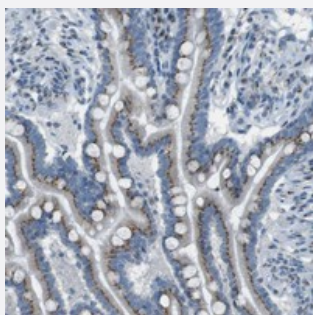


# TXNDC15 polyclonal antibody

Catalog # PAB20811      Size 100 uL

## Applications



### Immunohistochemistry (Formalin/PFA-fixed paraffin-embedded sections)

Immunohistochemical staining of human colon with TXNDC15 polyclonal antibody (Cat # PAB20811) shows cytoplasmic positivity with a granular pattern in glandular cells at 1:10-1:20 dilution.

## Specification

<b>Product Description</b>	Rabbit polyclonal antibody raised against recombinant TXNDC15.
<b>Immunogen</b>	Recombinant protein corresponding to amino acids of human TXNDC15.
<b>Sequence</b>	TGLENFTLKILNMSQDLMDFLNPNGSDCTLVLFYTPWCRFSASLAPHFNSLPRAFPALHFLALDA SQHSSLSTRFGTVAVPNILLFQGAKPMARFNHTDRTLETCLKIFIFNQTGIEAKKNVVVTQADQI
<b>Host</b>	Rabbit
<b>Reactivity</b>	Human
<b>Form</b>	Liquid
<b>Purification</b>	Antigen affinity purification
<b>Isotype</b>	IgG
<b>Recommend Usage</b>	Immunohistochemistry (1:10-1:20) The optimal working dilution should be determined by the end user.
<b>Storage Buffer</b>	In PBS, pH 7.2 (40% glycerol, 0.02% sodium azide)

**Storage Instruction**

Store at 4°C. For long term storage store at -20°C.  
Aliquot to avoid repeated freezing and thawing.

**Note**

This product contains sodium azide: a POISONOUS AND HAZARDOUS SUBSTANCE which should be handled by trained staff only.

## Applications

- Immunohistochemistry (Formalin/PFA-fixed paraffin-embedded sections)

Immunohistochemical staining of human colon with TXNDC15 polyclonal antibody (Cat # PAB20811) shows cytoplasmic positivity with a granular pattern in glandular cells at 1:10-1:20 dilution.

## Gene Info — TXNDC15

**Entrez GeneID** [79770](#)

**Protein Accession#** [Q96J42](#)

**Gene Name** TXNDC15

**Gene Alias** C5orf14, FLJ22625, UNQ335

**Gene Description** thioredoxin domain containing 15

**Gene Ontology** [Hyperlink](#)

**Other Designations** 2310047H23Rik|disulfide isomerase