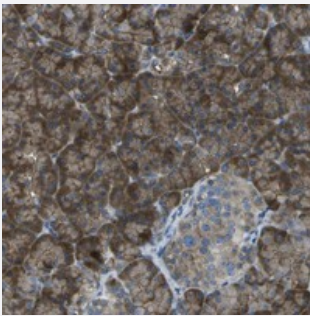


KCTD3 polyclonal antibody

Catalog # PAB20801 Size 100 uL

Applications



Immunohistochemistry (Formalin/PFA-fixed paraffin-embedded sections)

Immunohistochemical staining of human pancreas with KCTD3 polyclonal antibody (Cat # PAB20801) shows strong cytoplasmic positivity in exocrine cells.

Specification

Product Description	Rabbit polyclonal antibody raised against recombinant KCTD3.
Immunogen	Recombinant protein corresponding to amino acids of human KCTD3.
Sequence	ITPLVRRLLLCEELERSSCGSVLFHGYLPPPGIPSRKINNTVRSADSRNGLNSTEGEARGNGTQPV LSGTGEETVRLGFPVDPRKVLVAGHHNWIVAAYAHFAVCYRIKESSGWQQVFTSP
Host	Rabbit
Reactivity	Human
Form	Liquid
Purification	Antigen affinity purification
Isotype	IgG
Recommend Usage	Immunohistochemistry (1:50-1:200) The optimal working dilution should be determined by the end user.
Storage Buffer	In PBS, pH 7.2 (40% glycerol, 0.02% sodium azide)

Storage Instruction

Store at 4°C. For long term storage store at -20°C.
Aliquot to avoid repeated freezing and thawing.

Note

This product contains sodium azide: a POISONOUS AND HAZARDOUS SUBSTANCE which should be handled by trained staff only.

Applications

- Immunohistochemistry (Formalin/PFA-fixed paraffin-embedded sections)

Immunohistochemical staining of human pancreas with KCTD3 polyclonal antibody (Cat # PAB20801) shows strong cytoplasmic positivity in exocrine cells.

Gene Info — KCTD3

Entrez GeneID[51133](#)**Protein Accession#**[Q9Y597](#)**Gene Name**

KCTD3

Gene Alias

MGC43935, NY-REN-45

Gene Description

potassium channel tetramerisation domain containing 3

Gene Ontology[Hyperlink](#)**Other Designations**

NY-REN-45 antigen|OTTHUMP00000035070|OTTHUMP00000061080