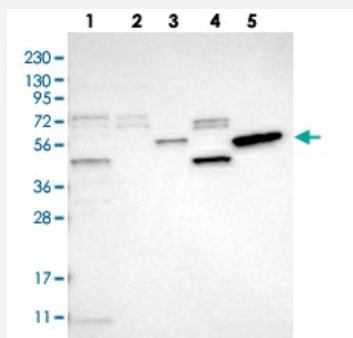


# SLC41A1 polyclonal antibody

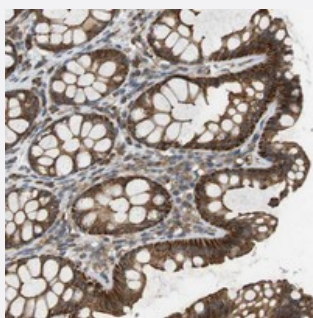
Catalog # PAB20800      Size 100 uL

## Applications



### Western Blot

Western blot analysis of Lane 1: RT-4, Lane 2: U-251 MG, Lane 3: Human Plasma, Lane 4: Liver, Lane 5: Tonsil with SLC41A1 polyclonal antibody (Cat # PAB20800).



### Immunohistochemistry (Formalin/PFA-fixed paraffin-embedded sections)

Immunohistochemical staining of human colon with SLC41A1 polyclonal antibody (Cat # PAB20800) shows strong cytoplasmic and membranous positivity in glandular cells.

## Specification

<b>Product Description</b>	Rabbit polyclonal antibody raised against recombinant SLC41A1.
<b>Immunogen</b>	Recombinant protein corresponding to amino acids of human SLC41A1.
<b>Sequence</b>	QASRISTFLHMNGMPGENSEQAPRRCPSPCTTFFSPDVNSRSAR
<b>Host</b>	Rabbit
<b>Reactivity</b>	Human
<b>Form</b>	Liquid
<b>Purification</b>	Antigen affinity purification

Isotype	IgG
Recommend Usage	Immunohistochemistry (1:50-1:200) Western Blot (1:250-1:500) The optimal working dilution should be determined by the end user.
Storage Buffer	In PBS, pH 7.2 (40% glycerol, 0.02% sodium azide)
Storage Instruction	Store at 4°C. For long term storage store at -20°C. Aliquot to avoid repeated freezing and thawing.
Note	This product contains sodium azide: a POISONOUS AND HAZARDOUS SUBSTANCE which should be handled by trained staff only.

## Applications

- Western Blot

Western blot analysis of Lane 1: RT-4, Lane 2: U-251 MG, Lane 3: Human Plasma, Lane 4: Liver, Lane 5: Tonsil with SLC41A1 polyclonal antibody (Cat # PAB20800).

- Immunohistochemistry (Formalin/PFA-fixed paraffin-embedded sections)

Immunohistochemical staining of human colon with SLC41A1 polyclonal antibody (Cat # PAB20800) shows strong cytoplasmic and membranous positivity in glandular cells.

## Gene Info — SLC41A1

Entrez GeneID	<a href="#">254428</a>
Protein Accession#	<a href="#">Q8IVJ1</a>
Gene Name	SLC41A1
Gene Alias	MgtE
Gene Description	solute carrier family 41, member 1
Omim ID	<a href="#">610801</a>
Gene Ontology	<a href="#">Hyperlink</a>
Gene Summary	O
Other Designations	OTTHUMP00000034231 solute carrier family 41 member 1