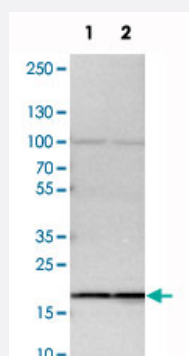


SSR3 polyclonal antibody

Catalog # PAB20781 Size 100 uL

Applications

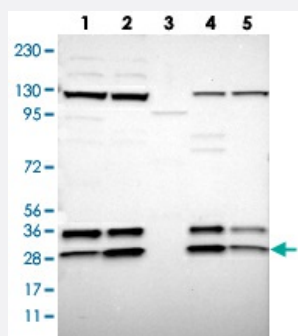


Western Blot (Cell lysate)

Western blot analysis of cell lysates with SSR3 polyclonal antibody (Cat # PAB20781).

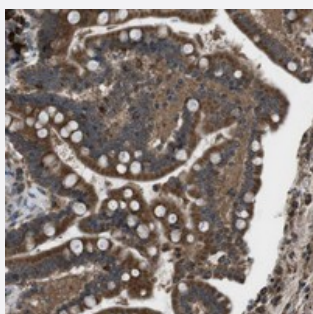
Lane 1 : NIH/3T3

Lane 2 : NBT-II



Western Blot

Western blot analysis of Lane 1: RT-4, Lane 2: U-251 MG, Lane 3: Human Plasma, Lane 4: Liver, Lane 5: Tonsil with SSR3 polyclonal antibody (Cat # PAB20781).



Immunohistochemistry (Formalin/PFA-fixed paraffin-embedded sections)

Immunohistochemical staining of human colon with SSR3 polyclonal antibody (Cat # PAB20781) shows strong cytoplasmic positivity in glandular cells.

Specification

Product Description

Rabbit polyclonal antibody raised against recombinant SSR3.

Immunogen	Recombinant protein corresponding to amino acids of human SSR3.
Sequence	VLKHKVAQKREDAVSKEVTRKLSEADNRKMSRKEKDERILWKKNEVADYEA
Host	Rabbit
Reactivity	Human, Mouse, Rat
Form	Liquid
Purification	Antigen affinity purification
Isotype	IgG
Recommend Usage	Immunohistochemistry (1:200-1:500) Western Blot (1:250-1:500) The optimal working dilution should be determined by the end user.
Storage Buffer	In PBS, pH 7.2 (40% glycerol, 0.02% sodium azide)
Storage Instruction	Store at 4°C. For long term storage store at -20°C. Aliquot to avoid repeated freezing and thawing.
Note	This product contains sodium azide: a POISONOUS AND HAZARDOUS SUBSTANCE which should be handled by trained staff only.

Applications

- Western Blot (Cell lysate)

Western blot analysis of cell lysates with SSR3 polyclonal antibody (Cat # PAB20781).

Lane 1 : NIH/3T3

Lane 2 : NBT-II

- Western Blot

Western blot analysis of Lane 1: RT-4, Lane 2: U-251 MG, Lane 3: Human Plasma, Lane 4: Liver, Lane 5: Tonsil with SSR3 polyclonal antibody (Cat # PAB20781).

- Immunohistochemistry (Formalin/PFA-fixed paraffin-embedded sections)

Immunohistochemical staining of human colon with SSR3 polyclonal antibody (Cat # PAB20781) shows strong cytoplasmic positivity in glandular cells.

Gene Info — SSR3

Entrez GeneID [6747](#)

Protein Accession#	Q9UNL2
Gene Name	SSR3
Gene Alias	TRAPG
Gene Description	signal sequence receptor, gamma (translocon-associated protein gamma)
Omim ID	606213
Gene Ontology	Hyperlink
Gene Summary	<p>The signal sequence receptor (SSR) is a glycosylated endoplasmic reticulum (ER) membrane receptor associated with protein translocation across the ER membrane. The SSR is comprised of four membrane proteins/subunits: alpha, beta, gamma, and delta. The first two are glycosylated subunits and the latter two are non-glycosylated subunits. The protein encoded by this gene is the gamma subunit and is predicted to span the membrane four times. [provided by RefSeq]</p>
Other Designations	SSR gamma TRAP-complex gamma subunit TRAP-gamma signal sequence receptor gamma subunit translocon-associated protein gamma subunit