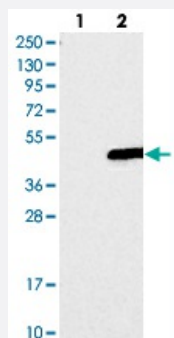


YIPF3 polyclonal antibody

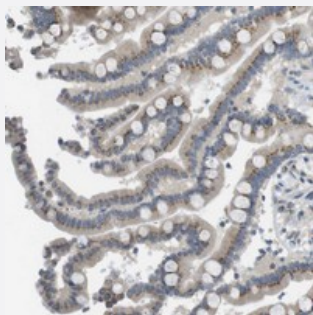
Catalog # PAB20776 Size 100 uL

Applications



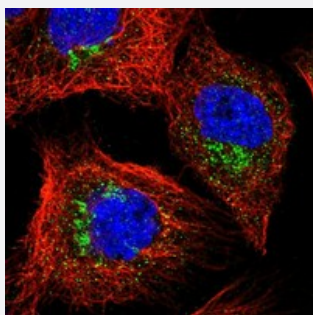
Western Blot (Transfected lysate)

Western blot analysis of Lane 1: Negative control (vector only transfected HEK293T lysate), Lane 2: Over-expression Lysate (Co-expressed with a C-terminal myc-DDK tag (~3.1 kDa) in mammalian HEK293T cells with YIPF3 polyclonal antibody (Cat # PAB20776) at 1:250-1:500 dilution.



Immunohistochemistry (Formalin/PFA-fixed paraffin-embedded sections)

Immunohistochemical staining of human colon with YIPF3 polyclonal antibody (Cat # PAB20776) shows moderate cytoplasmic positivity in granular pattern in glandular cells at 1:10-1:20 dilution.



Immunofluorescence

Immunofluorescent staining of human cell line A-431 with YIPF3 polyclonal antibody (Cat # PAB20776) at 1-4 ug/mL dilution shows positivity in golgi apparatus, vesicles.

Specification

Product Description

Rabbit polyclonal antibody raised against recombinant YIPF3.

Immunogen

Recombinant protein corresponding to amino acids of human YIPF3.

Sequence	GILDTLEGPNIPPIQRVPRDIPAMLPAARLPTTVLNATAKAVAVTLQSH
Host	Rabbit
Reactivity	Human
Form	Liquid
Purification	Antigen affinity purification
Isotype	IgG
Recommend Usage	Immunohistochemistry (1:10-1:20) Western Blot (1:250-1:500) Immunofluorescence (1-4 ug/mL) The optimal working dilution should be determined by the end user.
Storage Buffer	In PBS, pH 7.2 (40% glycerol, 0.02% sodium azide)
Storage Instruction	Store at 4°C. For long term storage store at -20°C. Aliquot to avoid repeated freezing and thawing.
Note	This product contains sodium azide: a POISONOUS AND HAZARDOUS SUBSTANCE which should be handled by trained staff only.

Applications

- Western Blot (Transfected lysate)

Western blot analysis of Lane 1: Negative control (vector only transfected HEK293T lysate), Lane 2: Over-expression Lysate (Co-expressed with a C-terminal myc-DDK tag (~3.1 kDa) in mammalian HEK293T cells with YIPF3 polyclonal antibody (Cat # PAB20776) at 1:250-1:500 dilution.

- Immunohistochemistry (Formalin/PFA-fixed paraffin-embedded sections)

Immunohistochemical staining of human colon with YIPF3 polyclonal antibody (Cat # PAB20776) shows moderate cytoplasmic positivity in granular pattern in glandular cells at 1:10-1:20 dilution.

- Immunofluorescence

Immunofluorescent staining of human cell line A-431 with YIPF3 polyclonal antibody (Cat # PAB20776) at 1-4 ug/mL dilution shows positivity in golgi apparatus, vesicles.

Gene Info — YIPF3

Entrez GeneID [25844](#)

Protein Accession# [Q9GZM5](#)

Gene Name	YIPF3
Gene Alias	C6orf109, DKFZp566C243, FinGER3, KLIP1, dJ337H4.3
Gene Description	Yip1 domain family, member 3
Omim ID	609775
Gene Ontology	Hyperlink
Gene Summary	O
Other Designations	OTTHUMP00000039825 killer lineage protein 1 natural killer cell-specific antigen KLIP1