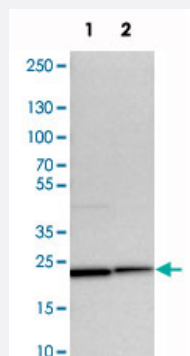


YIF1A polyclonal antibody

Catalog # PAB20773 Size 100 uL

Applications

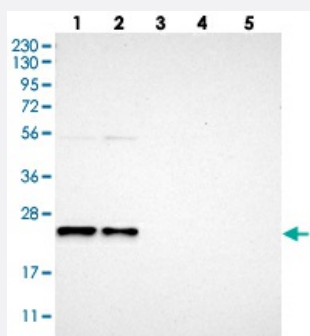


Western Blot (Cell lysate)

Western blot analysis of cell lysates with YIF1A polyclonal antibody (Cat # PAB20773) at 1:250-1:500 dilution.

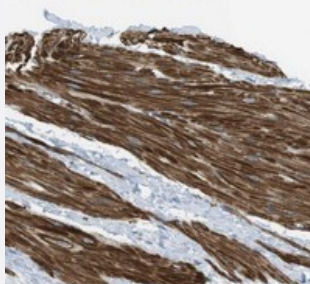
Lane 1 : NIH/3T3

Lane 2 : NBT-II



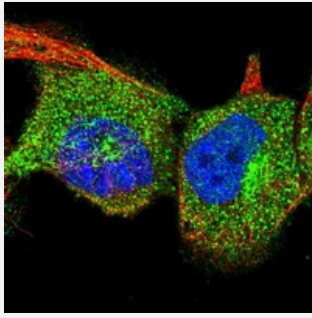
Western Blot

Western blot analysis of Lane 1: RT-4, Lane 2: U-251 MG, Lane 3: Human Plasma, Lane 4: Liver, Lane 5: Tonsil with YIF1A polyclonal antibody (Cat # PAB20773) at 1:250-1:500 dilution.



Immunohistochemistry (Formalin/PFA-fixed paraffin-embedded sections)

Immunohistochemical staining of human smooth muscle with YIF1A polyclonal antibody (Cat # PAB20773) shows strong cytoplasmic positivity in smooth muscle cells at 1:50-1:200 dilution.



Immunofluorescence

Immunofluorescent staining of human cell line A-431 with YIF1A polyclonal antibody (Cat # PAB20773) at 1-4 ug/mL dilution shows positivity in golgi apparatus, vesicles.

Specification

Product Description	Rabbit polyclonal antibody raised against recombinant YIF1A.
Immunogen	Recombinant protein corresponding to amino acids of human YIF1A.
Sequence	ALMYFIVRSLRTAALGPDSMGGPVPRQLQ
Host	Rabbit
Reactivity	Human, Mouse, Rat
Form	Liquid
Purification	Antigen affinity purification
Isotype	IgG
Recommend Usage	Immunohistochemistry (1:50-1:200) Western Blot (1:250-1:500) Immunofluorescence (1-4 ug/mL) The optimal working dilution should be determined by the end user.
Storage Buffer	In PBS, pH 7.2 (40% glycerol, 0.02% sodium azide)
Storage Instruction	Store at 4°C. For long term storage store at -20°C. Aliquot to avoid repeated freezing and thawing.
Note	This product contains sodium azide: a POISONOUS AND HAZARDOUS SUBSTANCE which should be handled by trained staff only.

Applications

- Western Blot (Cell lysate)

Western blot analysis of cell lysates with YIF1A polyclonal antibody (Cat # PAB20773) at 1:250-1:500 dilution.

Lane 1 : NIH/3T3

Lane 2 : NBT-II

- Western Blot

Western blot analysis of Lane 1: RT-4, Lane 2: U-251 MG, Lane 3: Human Plasma, Lane 4: Liver, Lane 5: Tonsil with YIF1A polyclonal antibody (Cat # PAB20773) at 1:250-1:500 dilution.

- Immunohistochemistry (Formalin/PFA-fixed paraffin-embedded sections)

Immunohistochemical staining of human smooth muscle with YIF1A polyclonal antibody (Cat # PAB20773) shows strong cytoplasmic positivity in smooth muscle cells at 1:50-1:200 dilution.

- Immunofluorescence

Immunofluorescent staining of human cell line A-431 with YIF1A polyclonal antibody (Cat # PAB20773) at 1-4 ug/mL dilution shows positivity in golgi apparatus, vesicles.

Gene Info — YIF1A

Entrez GeneID [10897](#)

Protein Accession# [O95070](#)

Gene Name YIF1A

Gene Alias 54TM, FinGER7, YIF1, YIF1P

Gene Description Yip1 interacting factor homolog A (S. cerevisiae)

Omim ID [611484](#)

Gene Ontology [Hyperlink](#)

Other Designations OTTHUMP00000128268|Yip1 interacting factor homolog|Yip1p-interacting factor|putative Rab5-interacting protein|putative transmembrane protein 54TMp