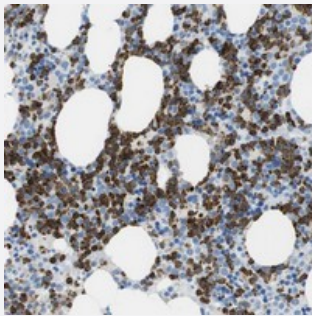


C19orf59 polyclonal antibody

Catalog # PAB20761

Size 100 uL

Applications



Immunohistochemistry (Formalin/PFA-fixed paraffin-embedded sections)

Immunohistochemical staining of human bone marrow with C19orf59 polyclonal antibody (Cat # PAB20761) shows strong cytoplasmic positivity in bone marrow poietic cells.

Specification

| | |
|----------------------------|---|
| Product Description | Rabbit polyclonal antibody raised against recombinant C19orf59. |
| Immunogen | Recombinant protein corresponding to amino acids of human C19orf59. |
| Sequence | MSKELLGFKRELWNVSNSVQACEERQKRGWDSVQQSITMVRSKIDRLETTLAGIKNIDTKVQKILE VLQKMPQSSPQ |
| Host | Rabbit |
| Reactivity | Human |
| Form | Liquid |
| Purification | Antigen affinity purification |
| Isotype | IgG |
| Recommend Usage | Immunohistochemistry (1:50-1:200) Western Blot (1:250-1:500) The optimal working dilution should be determined by the end user. |
| Storage Buffer | In PBS, pH 7.2 (40% glycerol, 0.02% sodium azide) |

Storage Instruction

Store at 4°C. For long term storage store at -20°C.
Aliquot to avoid repeated freezing and thawing.

Note

This product contains sodium azide: a POISONOUS AND HAZARDOUS SUBSTANCE which should be handled by trained staff only.

Applications

- Western Blot
- Immunohistochemistry (Formalin/PFA-fixed paraffin-embedded sections)

Immunohistochemical staining of human bone marrow with C19orf59 polyclonal antibody (Cat # PAB20761) shows strong cytoplasmic positivity in bone marrow poietic cells.

Gene Info — C19orf59

Entrez GeneID[199675](#)**Protein Accession#**[Q8IX19](#)**Gene Name**

C19orf59

Gene Alias

MCEMP1, MGC132456

Gene Description

chromosome 19 open reading frame 59

Omim ID[609565](#)**Gene Ontology**[Hyperlink](#)**Gene Summary**

This gene encodes a single-pass transmembrane protein. Based on its expression pattern, it is speculated to be involved in regulating mast cell differentiation or immune responses. [provided by RefSeq]

Other Designations

mast cell-expressed membrane protein 1