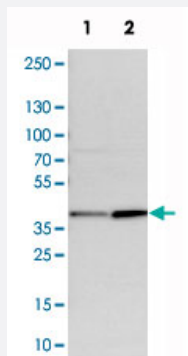


CALHM2 polyclonal antibody

Catalog # PAB20756 Size 100 uL

Applications

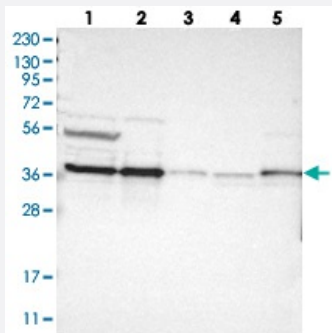


Western Blot (Cell lysate)

Western blot analysis of cell lysates with CALHM2 polyclonal antibody (Cat # PAB20756).

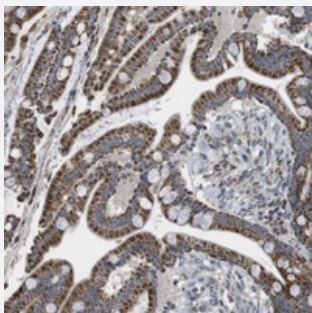
Lane 1 : NIH/3T3

Lane 2 : NBT-II



Western Blot

Western blot analysis of Lane 1: RT-4, Lane 2: U-251 MG, Lane 3: Human Plasma, Lane 4: Liver, Lane 5: Tonsil with CALHM2 polyclonal antibody (Cat # PAB20756).



Immunohistochemistry (Formalin/PFA-fixed paraffin-embedded sections)

Immunohistochemical staining of human colon with CALHM2 polyclonal antibody (Cat # PAB20756) shows strong cytoplasmic positivity in glandular cells.

Specification

Product Description

Rabbit polyclonal antibody raised against recombinant CALHM2.

Immunogen	Recombinant protein corresponding to amino acids of human CALHM2.
Sequence	RGEAYVCALSEFVDPSSLTAREEHFPSAHATEILARFPCKENPDNLSDFFREEVSRRLRYESQ
Host	Rabbit
Reactivity	Human, Mouse, Rat
Form	Liquid
Purification	Antigen affinity purification
Isotype	IgG
Recommend Usage	Immunohistochemistry (1:200-1:500) Western Blot (1:250-1:500) The optimal working dilution should be determined by the end user.
Storage Buffer	In PBS, pH 7.2 (40% glycerol, 0.02% sodium azide)
Storage Instruction	Store at 4°C. For long term storage store at -20°C. Aliquot to avoid repeated freezing and thawing.
Note	This product contains sodium azide: a POISONOUS AND HAZARDOUS SUBSTANCE which should be handled by trained staff only.

Applications

- Western Blot (Cell lysate)

Western blot analysis of cell lysates with CALHM2 polyclonal antibody (Cat # PAB20756).

Lane 1 : NIH/3T3

Lane 2 : NBT-II

- Western Blot

Western blot analysis of Lane 1: RT-4, Lane 2: U-251 MG, Lane 3: Human Plasma, Lane 4: Liver, Lane 5: Tonsil with CALHM2 polyclonal antibody (Cat # PAB20756).

- Immunohistochemistry (Formalin/PFA-fixed paraffin-embedded sections)

Immunohistochemical staining of human colon with CALHM2 polyclonal antibody (Cat # PAB20756) shows strong cytoplasmic positivity in glandular cells.

Gene Info — CALHM2

Entrez GeneID [51063](#)

Protein Accession#	Q9HA72
Gene Name	CALHM2
Gene Alias	FAM26B
Gene Description	calcium homeostasis modulator 2
Gene Ontology	Hyperlink
Gene Summary	member B
Other Designations	OTTHUMP00000020411 OTTHUMP00000020412 family with sequence similarity 26, member B

Disease

- [Alzheimer Disease](#)
- [Genetic Predisposition to Disease](#)