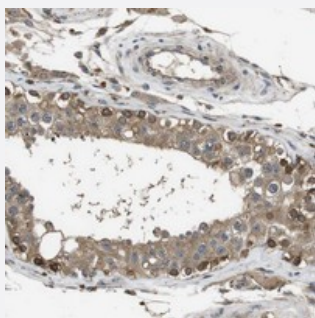


FZD10 polyclonal antibody

Catalog # PAB20734 Size 100 uL

Applications



Immunohistochemistry (Formalin/PFA-fixed paraffin-embedded sections)

Immunohistochemical staining of human testis with FZD10 polyclonal antibody (Cat # PAB20734) shows strong cytoplasmic positivity in a subset of cells in seminiferous ducts.

Specification

Product Description	Rabbit polyclonal antibody raised against recombinant FZD10.
Immunogen	Recombinant protein corresponding to amino acids of human FZD10.
Sequence	KTLQSWQQVCSRRLKKKSRRKPASVITSGGYKKAQHPQKTHHGKYEIPAQSPTCV
Host	Rabbit
Reactivity	Human
Form	Liquid
Purification	Antigen affinity purification
Isotype	IgG
Recommend Usage	Immunohistochemistry (1:10-1:20) The optimal working dilution should be determined by the end user.
Storage Buffer	In PBS, pH 7.2 (40% glycerol, 0.02% sodium azide)
Storage Instruction	Store at 4°C. For long term storage store at -20°C. Aliquot to avoid repeated freezing and thawing.

Note

This product contains sodium azide: a POISONOUS AND HAZARDOUS SUBSTANCE which should be handled by trained staff only.

Applications

- Immunohistochemistry (Formalin/PFA-fixed paraffin-embedded sections)

Immunohistochemical staining of human testis with FZD10 polyclonal antibody (Cat # PAB20734) shows strong cytoplasmic positivity in a subset of cells in seminiferous ducts.

Gene Info — FZD10

Entrez GeneID [11211](#)

Protein Accession# [Q9ULW2](#)

Gene Name FZD10

Gene Alias CD350, FZ-10, FzE7, hFz10

Gene Description frizzled homolog 10 (Drosophila)

Omim ID [606147](#)

Gene Ontology [Hyperlink](#)

Gene Summary This gene is a member of the frizzled gene family. Members of this family encode 7-transmembrane domain proteins that are receptors for the Wingless type MMTV integration site family of signaling proteins. Most frizzled receptors are coupled to the beta-catenin canonical signaling pathway. Using array analysis, expression of this intronless gene is significantly up-regulated in two cases of primary colon cancer. [provided by RefSeq]

Other Designations frizzled 10

Pathway

- [Basal cell carcinoma](#)
- [Colorectal cancer](#)
- [Melanogenesis](#)
- [Pathways in cancer](#)

- [Wnt signaling pathway](#)

Disease

- [Cleft Lip](#)
- [Cleft Palate](#)