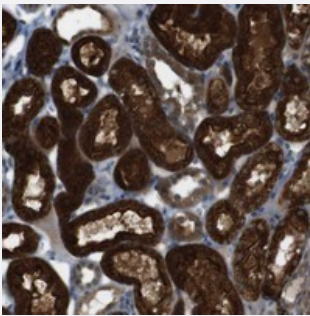


ZDHHC20 polyclonal antibody

Catalog # PAB20732 Size 100 uL

Applications



Immunohistochemistry (Formalin/PFA-fixed paraffin-embedded sections)

Immunohistochemical staining of human kidney with ZDHHC20 polyclonal antibody (Cat # PAB20732) shows strong cytoplasmic positivity in cells in tubules at 1:20-1:50 dilution.

Specification

Product Description	Rabbit polyclonal antibody raised against recombinant ZDHHC20.
Immunogen	Recombinant protein corresponding to amino acids of human ZDHHC20.
Sequence	SKEFYLSNSEKERYEKEFSQERQQEILRRAARALPIYTTSASKTIRYCEKCQLIKPDRAHHCSACDS CILKMDHHCPWVNNCV
Host	Rabbit
Reactivity	Human
Form	Liquid
Purification	Antigen affinity purification
Isotype	IgG
Recommend Usage	Immunohistochemistry (1:20-1:50) The optimal working dilution should be determined by the end user.
Storage Buffer	In PBS, pH 7.2 (40% glycerol, 0.02% sodium azide)

Storage Instruction

Store at 4°C. For long term storage store at -20°C.
Aliquot to avoid repeated freezing and thawing.

Note

This product contains sodium azide: a POISONOUS AND HAZARDOUS SUBSTANCE which should be handled by trained staff only.

Applications

- Immunohistochemistry (Formalin/PFA-fixed paraffin-embedded sections)

Immunohistochemical staining of human kidney with ZDHHC20 polyclonal antibody (Cat # PAB20732) shows strong cytoplasmic positivity in cells in tubules at 1:20-1:50 dilution.

Gene Info — ZDHHC20

Entrez GeneID[253832](#)**Protein Accession#**[Q5W0Z9](#)**Gene Name**

ZDHHC20

Gene Alias

FLJ25952, MGC126005

Gene Description

zinc finger, DHHC-type containing 20

Gene Ontology[Hyperlink](#)**Gene Summary**

O

Other Designations

4933421L13Rik|DHHC-containing protein 20|OTTHUMP00000040333|zinc finger, DHHC domain containing 20