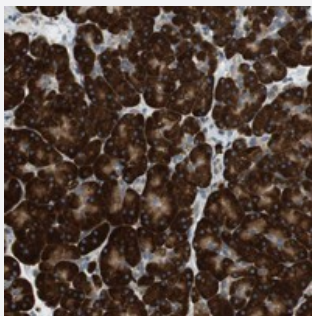


# TMEM200A polyclonal antibody

Catalog # PAB20721      Size 100 uL

## Applications



### Immunohistochemistry (Formalin/PFA-fixed paraffin-embedded sections)

Immunohistochemical staining of human pancreas with TMEM200A polyclonal antibody (Cat # PAB20721) shows strong cytoplasmic positivity in exocrine glandular cells.

## Specification

<b>Product Description</b>	Rabbit polyclonal antibody raised against recombinant TMEM200A.
<b>Immunogen</b>	Recombinant protein corresponding to amino acids of human TMEM200A.
<b>Sequence</b>	EHFIDAETTLSTNETQVIRNEGGVVVRFEEQHLHSDKM
<b>Host</b>	Rabbit
<b>Reactivity</b>	Human
<b>Form</b>	Liquid
<b>Purification</b>	Antigen affinity purification
<b>Isotype</b>	IgG
<b>Recommend Usage</b>	Immunohistochemistry (1:50-1:200) The optimal working dilution should be determined by the end user.
<b>Storage Buffer</b>	In PBS, pH 7.2 (40% glycerol, 0.02% sodium azide)
<b>Storage Instruction</b>	Store at 4°C. For long term storage store at -20°C. Aliquot to avoid repeated freezing and thawing.

**Note**

This product contains sodium azide: a POISONOUS AND HAZARDOUS SUBSTANCE which should be handled by trained staff only.

## Applications

- Immunohistochemistry (Formalin/PFA-fixed paraffin-embedded sections)

Immunohistochemical staining of human pancreas with TMEM200A polyclonal antibody (Cat # PAB20721) shows strong cytoplasmic positivity in exocrine glandular cells.

## Gene Info — TMEM200A

**Entrez GeneID** [114801](#)

**Protein Accession#** [Q86VY9](#)

**Gene Name** TMEM200A

**Gene Alias** KIAA1913, TTMA, TTMC

**Gene Description** transmembrane protein 200A

**Gene Ontology** [Hyperlink](#)

**Other Designations** OTTHUMP00000017196|found in a patient with schizophrenia|two transmembrane C