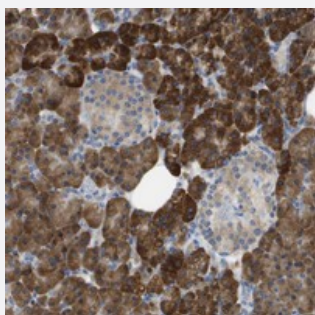


SDR42E1 polyclonal antibody

Catalog # PAB20719

Size 100 uL

Applications



Immunohistochemistry (Formalin/PFA-fixed paraffin-embedded sections)

Immunohistochemical staining of human pancreas with SDR42E1 polyclonal antibody (Cat # PAB20719) shows strong cytoplasmic positivity in exocrine cells at 1:200-1:500 dilution.

Specification

Product Description	Rabbit polyclonal antibody raised against recombinant SDR42E1.
Immunogen	Recombinant protein corresponding to amino acids of human SDR42E1.
Sequence	FQPFLTRTEVYKGTGVTHYFSLEKAKKELGYKAQPFDLQEAVEWFKAHGHGRSSGSRDSEC
Host	Rabbit
Reactivity	Human
Form	Liquid
Purification	Antigen affinity purification
Isotype	IgG
Recommend Usage	Immunohistochemistry (1:200-1:500) The optimal working dilution should be determined by the end user.
Storage Buffer	In PBS, pH 7.2 (40% glycerol, 0.02% sodium azide)
Storage Instruction	Store at 4°C. For long term storage store at -20°C. Aliquot to avoid repeated freezing and thawing.

Note

This product contains sodium azide: a POISONOUS AND HAZARDOUS SUBSTANCE which should be handled by trained staff only.

Applications

- Immunohistochemistry (Formalin/PFA-fixed paraffin-embedded sections)

Immunohistochemical staining of human pancreas with SDR42E1 polyclonal antibody (Cat # PAB20719) shows strong cytoplasmic positivity in exocrine cells at 1:200-1:500 dilution.

Gene Info — SDR42E1

Entrez GeneID [93517](#)

Protein Accession# [Q8WUS8](#)

Gene Name SDR42E1

Gene Alias HSPC105

Gene Description short chain dehydrogenase/reductase family 42E, member 1

Gene Ontology [Hyperlink](#)

Gene Summary O

Other Designations NAD(P) dependent steroid dehydrogenase-like