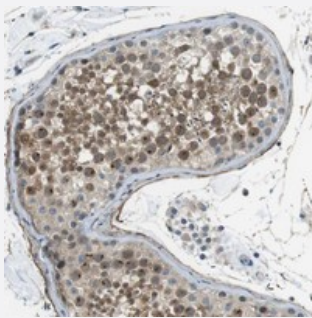


# ENTPD7 polyclonal antibody

Catalog # PAB20714      Size 100 uL

## Applications



### Immunohistochemistry (Formalin/PFA-fixed paraffin-embedded sections)

Immunohistochemical staining of human testis with ENTPD7 polyclonal antibody (Cat # PAB20714) shows moderate nuclear and cytoplasmic positivity in cells in seminiferous ducts at 1:20-1:50 dilution.

## Specification

<b>Product Description</b>	Rabbit polyclonal antibody raised against recombinant ENTPD7.
<b>Immunogen</b>	Recombinant protein corresponding to amino acids of human ENTPD7.
<b>Sequence</b>	YEDLV LNETL NKNRLLGQKTGLSPDNPFLDPCLPVGLTDVVERNSQVLHVRGRGDWVSCGAMLSPLLARSNTSQASLNGIYQSPIDFNNSEF
<b>Host</b>	Rabbit
<b>Reactivity</b>	Human
<b>Form</b>	Liquid
<b>Purification</b>	Antigen affinity purification
<b>Isotype</b>	IgG
<b>Recommend Usage</b>	Immunohistochemistry (1:20-1:50) The optimal working dilution should be determined by the end user.
<b>Storage Buffer</b>	In PBS, pH 7.2 (40% glycerol, 0.02% sodium azide)

**Storage Instruction**

Store at 4°C. For long term storage store at -20°C.  
Aliquot to avoid repeated freezing and thawing.

**Note**

This product contains sodium azide: a POISONOUS AND HAZARDOUS SUBSTANCE which should be handled by trained staff only.

## Applications

- Immunohistochemistry (Formalin/PFA-fixed paraffin-embedded sections)

Immunohistochemical staining of human testis with ENTPD7 polyclonal antibody (Cat # PAB20714) shows moderate nuclear and cytoplasmic positivity in cells in seminiferous ducts at 1:20-1:50 dilution.

## Gene Info — ENTPD7

**Entrez GeneID** [57089](#)

**Protein Accession#** [Q9NQZ7](#)

**Gene Name** ENTPD7

**Gene Alias** DKFZp667O124, FLJ30978, FLJ31830, FLJ41522, FLJ95364, LALP1, MGC141913, RP11-483F11.1

**Gene Description** ectonucleoside triphosphate diphosphohydrolase 7

**Gene Ontology** [Hyperlink](#)

**Other Designations** OTTHUMP00000020259|lysosomal apyrase-like protein 1

## Disease

- [Alzheimer Disease](#)
- [Genetic Predisposition to Disease](#)