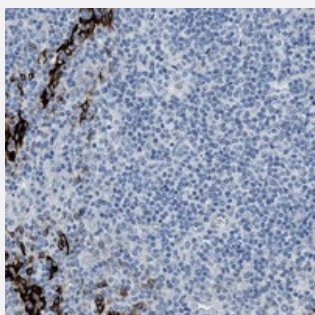


# FDCSP polyclonal antibody

Catalog # PAB20711

Size 100 uL

## Applications



### Immunohistochemistry (Formalin/PFA-fixed paraffin-embedded sections)

Immunohistochemical staining of human tonsil with FDCSP polyclonal antibody (Cat # PAB20711) shows strong cytoplasmic positivity in squamous epithelial cells at 1:50-1:200 dilution.

## Specification

Product Description	Rabbit polyclonal antibody raised against recombinant FDCSP.
Immunogen	Recombinant protein corresponding to amino acids of human FDCSP.
Sequence	KRSISDSDELASGFFVFPYPYFRPLPPIPFRFPWFRRNFPIPIESAPTTPL
Host	Rabbit
Reactivity	Human
Form	Liquid
Purification	Antigen affinity purification
Isotype	IgG
Recommend Usage	Immunohistochemistry (1:50-1:200) The optimal working dilution should be determined by the end user.
Storage Buffer	In PBS, pH 7.2 (40% glycerol, 0.02% sodium azide)
Storage Instruction	Store at 4°C. For long term storage store at -20°C. Aliquot to avoid repeated freezing and thawing.

**Note**

This product contains sodium azide: a POISONOUS AND HAZARDOUS SUBSTANCE which should be handled by trained staff only.

## Applications

- Immunohistochemistry (Formalin/PFA-fixed paraffin-embedded sections)

Immunohistochemical staining of human tonsil with FDCSP polyclonal antibody (Cat # PAB20711) shows strong cytoplasmic positivity in squamous epithelial cells at 1:50-1:200 dilution.

## Gene Info — FDCSP

**Entrez GeneID** [260436](#)

**Protein Accession#** [Q8NFU4](#)

**Gene Name** FDCSP

**Gene Alias** UNQ733/PRO1419, C4orf7, FDC-SP

**Gene Description** follicular dendritic cell secreted protein

**Omim ID** [607241](#)

**Gene Ontology** [Hyperlink](#)

**Gene Summary** FDCSP is expressed by follicular dendritic cells (FDCs) and activated leukocytes during ongoing immune responses.[supplied by OMIM]

**Other Designations** FDC secreted protein; follicular dendritic cell secreted peptide

## Publication Reference

- [Follicular dendritic cell-secreted protein gene expression is upregulated and spread in nifedipine-induced gingival overgrowth.](#)

Nakayama Y, Inoue E, Kato A, Iwai Y, Takai-Yamazaki M, Tsuruya Y, Yamaguchi A, Noda K, Nomoto T, Ganss B, Ogata Y. Odontology 2020 Oct; 108(4):532.

Application: IF, IHC-P, Human, Ca9-22, GE1 cells, Human gingival tissues

- [Localization and expression pattern of amelotin, odontogenic ameloblast-associated protein and follicular dendritic cell-secreted protein in the junctional epithelium of inflamed gingiva.](#)

Nakayama Y, Kobayashi R, Matsui S, Matsumura H, Iwai Y, Noda K, Yamazaki M, Kurita-Ochiai T, Yoshimura A, Shinomura T, Ganss B, Ogata Y.

Odontology 2017 Jul; 105(3):329.

Application: IHC-P, Human, Mouse, Gingival tissues from Human and Mouse