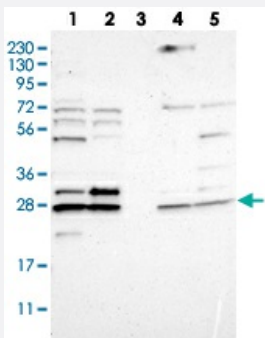


CNPY4 polyclonal antibody

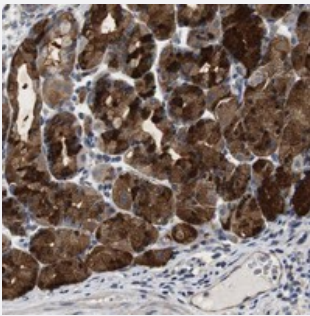
Catalog # PAB20700 Size 100 uL

Applications



Western Blot

Western blot analysis of Lane 1: RT-4, Lane 2: U-251 MG, Lane 3: Human Plasma, Lane 4: Liver, Lane 5: Tonsil with CNPY4 polyclonal antibody (Cat # PAB20700).



Immunohistochemistry (Formalin/PFA-fixed paraffin-embedded sections)

Immunohistochemical staining of human stomach with CNPY4 polyclonal antibody (Cat # PAB20700) shows strong cytoplasmic positivity in glandular cells.

Specification

Product Description	Rabbit polyclonal antibody raised against recombinant CNPY4.
Immunogen	Recombinant protein corresponding to amino acids of human CNPY4.
Sequence	IPLELWDEPSVEVTYLKKQCETMLEEFEDVGDWYFHHQEQPLQNFLCEGHVLPAAETACLQET WTGKEITDGEEKTEGEEEEEQEEEEEEEEEGGDKMTKTGSHPKLDRED
Host	Rabbit
Reactivity	Human
Form	Liquid

Purification	Antigen affinity purification
Isotype	IgG
Recommend Usage	Immunohistochemistry (1:200-1:500) Western Blot (1:250-1:500) The optimal working dilution should be determined by the end user.
Storage Buffer	In PBS, pH 7.2 (40% glycerol, 0.02% sodium azide)
Storage Instruction	Store at 4°C. For long term storage store at -20°C. Aliquot to avoid repeated freezing and thawing.
Note	This product contains sodium azide: a POISONOUS AND HAZARDOUS SUBSTANCE which should be handled by trained staff only.

Applications

- Western Blot

Western blot analysis of Lane 1: RT-4, Lane 2: U-251 MG, Lane 3: Human Plasma, Lane 4: Liver, Lane 5: Tonsil with CNPY4 polyclonal antibody (Cat # PAB20700).

- Immunohistochemistry (Formalin/PFA-fixed paraffin-embedded sections)

Immunohistochemical staining of human stomach with CNPY4 polyclonal antibody (Cat # PAB20700) shows strong cytoplasmic positivity in glandular cells.

Gene Info — CNPY4

Entrez GeneID	245812
Protein Accession#	Q8N129
Gene Name	CNPY4
Gene Alias	MGC40499, PRAT4B
Gene Description	canopy 4 homolog (zebrafish)
Omim ID	610047
Gene Ontology	Hyperlink
Other Designations	PRotein Associated with Tlr4 canopy 4 homolog