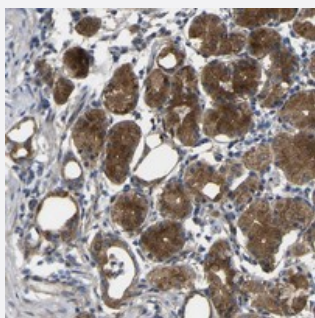


# SYPL1 polyclonal antibody

Catalog # PAB20698

Size 100 uL

## Applications



### Immunohistochemistry (Formalin/PFA-fixed paraffin-embedded sections)

Immunohistochemical staining of human stomach with SYPL1 polyclonal antibody (Cat # PAB20698) shows strong cytoplasmic positivity in glandular cells.

## Specification

Product Description	Rabbit polyclonal antibody raised against recombinant SYPL1.
Immunogen	Recombinant protein corresponding to amino acids of human SYPL1.
Sequence	ATGHNIIDELPPCKKKAVLCYFGSVTSMGS
Host	Rabbit
Reactivity	Human
Form	Liquid
Purification	Antigen affinity purification
Isotype	IgG
Recommend Usage	Immunohistochemistry (1:20-1:50) The optimal working dilution should be determined by the end user.
Storage Buffer	In PBS, pH 7.2 (40% glycerol, 0.02% sodium azide)
Storage Instruction	Store at 4°C. For long term storage store at -20°C. Aliquot to avoid repeated freezing and thawing.

**Note**

This product contains sodium azide: a POISONOUS AND HAZARDOUS SUBSTANCE which should be handled by trained staff only.

## Applications

- Immunohistochemistry (Formalin/PFA-fixed paraffin-embedded sections)

Immunohistochemical staining of human stomach with SYPL1 polyclonal antibody (Cat # PAB20698) shows strong cytoplasmic positivity in glandular cells.

## Gene Info — SYPL1

Entrez GeneID	<a href="#">6856</a>
Protein Accession#	<a href="#">Q16563</a>
Gene Name	SYPL1
Gene Alias	H-SP1, SYPL
Gene Description	synaptophysin-like 1
Gene Ontology	<a href="#">Hyperlink</a>
Other Designations	pantophysin synaptophysin-like protein