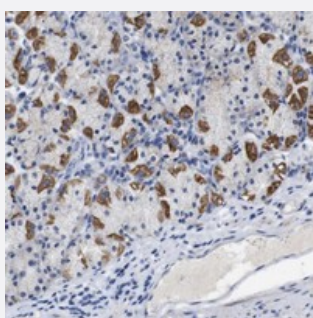


LRRC55 polyclonal antibody

Catalog # PAB20692 Size 100 uL

Applications



Immunohistochemistry (Formalin/PFA-fixed paraffin-embedded sections)

Immunohistochemical staining of human stomach with LRRC55 polyclonal antibody (Cat # PAB20692) shows strong cytoplasmic positivity in parietal cells.

Specification

Product Description	Rabbit polyclonal antibody raised against recombinant LRRC55.
Immunogen	Recombinant protein corresponding to amino acids of human LRRC55.
Sequence	RLAHLDSLNNFSHVPADMFQEAHGLVHIDLSHNPWLRRVHPQAFQGLMQLRDLDLSYGGLAFLSLEALEGLPGLVTLQIGGNPWVCGCTMEPLLKWLNRNRIQRCTADSQ
Host	Rabbit
Reactivity	Human
Form	Liquid
Purification	Antigen affinity purification
Isotype	IgG
Recommend Usage	Immunohistochemistry (1:20-1:50) The optimal working dilution should be determined by the end user.
Storage Buffer	In PBS, pH 7.2 (40% glycerol, 0.02% sodium azide)

Storage Instruction

Store at 4°C. For long term storage store at -20°C.
Aliquot to avoid repeated freezing and thawing.

Note

This product contains sodium azide: a POISONOUS AND HAZARDOUS SUBSTANCE which should be handled by trained staff only.

Applications

- Immunohistochemistry (Formalin/PFA-fixed paraffin-embedded sections)

Immunohistochemical staining of human stomach with LRRC55 polyclonal antibody (Cat # PAB20692) shows strong cytoplasmic positivity in parietal cells.

Gene Info — LRRC55

Entrez GeneID [219527](#)

Protein Accession# [Q6ZSA7](#)

Gene Name LRRC55

Gene Alias FLJ45686

Gene Description leucine rich repeat containing 55

Gene Ontology [Hyperlink](#)

Other Designations -

Disease

- [Tobacco Use Disorder](#)