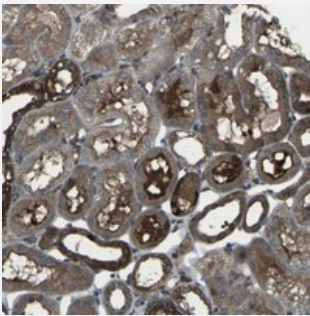


C7orf53 polyclonal antibody

Catalog # PAB20671 Size 100 uL

Applications



Immunohistochemistry (Formalin/PFA-fixed paraffin-embedded sections)

Immunohistochemical staining of human kidney with C7orf53 polyclonal antibody (Cat # PAB20671) shows strong cytoplasmic positivity in cells in tubules at 1:20-1:50 dilution.

Specification

Product Description	Rabbit polyclonal antibody raised against recombinant C7orf53.
Immunogen	Recombinant protein corresponding to amino acids of human C7orf53.
Sequence	HSSQDTGSCGIQEDGKLYVVDISINDLNKLNLCPAGSQHLFPLEDKIPVLGTNSGNGSRS
Host	Rabbit
Reactivity	Human
Form	Liquid
Purification	Antigen affinity purification
Isotype	IgG
Recommend Usage	Immunohistochemistry (1:20-1:50) Western Blot (1:250-1:500) The optimal working dilution should be determined by the end user.
Storage Buffer	In PBS, pH 7.2 (40% glycerol, 0.02% sodium azide)

Storage Instruction

Store at 4°C. For long term storage store at -20°C.
Aliquot to avoid repeated freezing and thawing.

Note

This product contains sodium azide: a POISONOUS AND HAZARDOUS SUBSTANCE which should be handled by trained staff only.

Applications

- Western Blot
- Immunohistochemistry (Formalin/PFA-fixed paraffin-embedded sections)

Immunohistochemical staining of human kidney with C7orf53 polyclonal antibody (Cat # PAB20671) shows strong cytoplasmic positivity in cells in tubules at 1:20-1:50 dilution.

Gene Info — C7orf53

Entrez GeneID[286006](#)**Protein Accession#**[Q8N8F7](#)**Gene Name**

C7orf53

Gene Alias

FLJ39575, MGC161427, MGC163440, MGC42850

Gene Description

chromosome 7 open reading frame 53

Gene Ontology[Hyperlink](#)**Other Designations**

hypothetical protein LOC286006