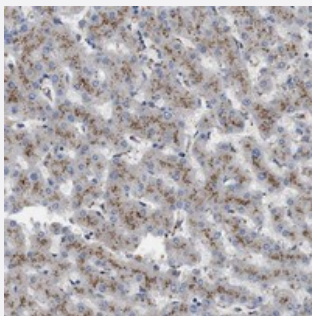


NHLRC3 polyclonal antibody

Catalog # PAB20670 Size 100 uL

Applications



Immunohistochemistry (Formalin/PFA-fixed paraffin-embedded sections)

Immunohistochemical staining of human liver with NHLRC3 polyclonal antibody (Cat # PAB20670) shows strong cytoplasmic positivity with granular pattern in hepatocytes at 1:10-1:20 dilution.

Specification

Product Description	Rabbit polyclonal antibody raised against recombinant NHLRC3.
Immunogen	Recombinant protein corresponding to amino acids of human NHLRC3.
Sequence	ILWLHGNGTGPAKFNIPHSVTLDSAGRVVWADRGNKRIQVFDKDTGEWLGAWNNCFTTEEGPSS VRFTPDGKYLIVAQLNLSRLSVVAAPPVGSIGECVISTIQLADQ
Host	Rabbit
Reactivity	Human
Form	Liquid
Purification	Antigen affinity purification
Isotype	IgG
Recommend Usage	Immunohistochemistry (1:10-1:20) The optimal working dilution should be determined by the end user.
Storage Buffer	In PBS, pH 7.2 (40% glycerol, 0.02% sodium azide)

Storage Instruction

Store at 4°C. For long term storage store at -20°C.
Aliquot to avoid repeated freezing and thawing.

Note

This product contains sodium azide: a POISONOUS AND HAZARDOUS SUBSTANCE which should be handled by trained staff only.

Applications

- Immunohistochemistry (Formalin/PFA-fixed paraffin-embedded sections)

Immunohistochemical staining of human liver with NHLRC3 polyclonal antibody (Cat # PAB20670) shows strong cytoplasmic positivity with granular pattern in hepatocytes at 1:10-1:20 dilution.

Gene Info — NHLRC3

Entrez GeneID[387921](#)**Protein Accession#**[Q5JS37](#)**Gene Name**

NHLRC3

Gene Alias

DKFZp313M1221, DKFZp686E1140

Gene Description

NHL repeat containing 3

Gene Ontology[Hyperlink](#)**Other Designations**

OTTHUMP00000018294|OTTHUMP00000018295|OTTHUMP00000042240