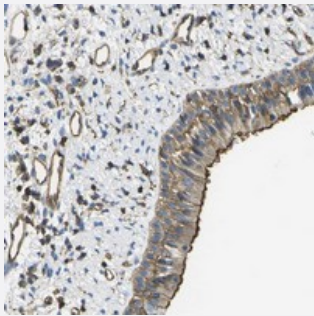


FAM110D polyclonal antibody

Catalog # PAB20668 Size 100 uL

Applications



Immunohistochemistry (Formalin/PFA-fixed paraffin-embedded sections)

Immunohistochemical staining of human nasopharynx with FAM110D polyclonal antibody (Cat # PAB20668) shows strong membranous and cytoplasmic positivity in respiratory epithelial cells at 1:20-1:50 dilution.

Specification

Product Description	Rabbit polyclonal antibody raised against recombinant FAM110D.
Immunogen	Recombinant protein corresponding to amino acids of human FAM110D.
Sequence	HQVIARRQEPALRGSPGLTPHPCNELGPPASPRTPRPVRRGSGRRLPRPDSLIFYRQKRDC
Host	Rabbit
Reactivity	Human
Form	Liquid
Purification	Antigen affinity purification
Isotype	IgG
Recommend Usage	Immunohistochemistry (1:20-1:50) The optimal working dilution should be determined by the end user.
Storage Buffer	In PBS, pH 7.2 (40% glycerol, 0.02% sodium azide)
Storage Instruction	Store at 4°C. For long term storage store at -20°C. Aliquot to avoid repeated freezing and thawing.

Note

This product contains sodium azide: a POISONOUS AND HAZARDOUS SUBSTANCE which should be handled by trained staff only.

Applications

- Immunohistochemistry (Formalin/PFA-fixed paraffin-embedded sections)

Immunohistochemical staining of human nasopharynx with FAM110D polyclonal antibody (Cat # PAB20668) shows strong membranous and cytoplasmic positivity in respiratory epithelial cells at 1:20-1:50 dilution.

Gene Info — FAM110D

Entrez GeneID [79927](#)

Protein Accession# [Q8TAY7](#)

Gene Name FAM110D

Gene Alias GRRP1, RP11-96L14.5

Gene Description family with sequence similarity 110, member D

Gene Ontology [Hyperlink](#)

Gene Summary glycine/arginine rich protein 1; glycine/arginine-rich protein 1; protein FAM110D

Other Designations glycine/arginine rich protein 1; glycine/arginine-rich protein 1; protein FAM110D