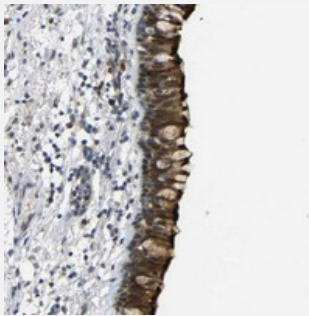


# C16orf89 polyclonal antibody

Catalog # PAB20664

Size 100 uL

## Applications



### Immunohistochemistry (Formalin/PFA-fixed paraffin-embedded sections)

Immunohistochemical staining of human bronchus with C16orf89 polyclonal antibody (Cat # PAB20664) shows strong nuclear and cytoplasmic and membranous positivity in respiratory epithelial cells.

## Specification

<b>Product Description</b>	Rabbit polyclonal antibody raised against recombinant C16orf89.
<b>Immunogen</b>	Recombinant protein corresponding to amino acids of human C16orf89.
<b>Sequence</b>	KSVREKWAQEPLLQPLSLRVGMLGEKLEAAIQRSLHYLKLSDPKYREFQLTLQPGFWKLPHAWI HTDASLVYPTFGPQDSFSEERSDVCLVQLLGTGTDSSSEPCGLSDLCRSLMTKPGCSGYCLSHQL LFFLWA
<b>Host</b>	Rabbit
<b>Reactivity</b>	Human
<b>Form</b>	Liquid
<b>Purification</b>	Antigen affinity purification
<b>Isotype</b>	IgG
<b>Recommend Usage</b>	Immunohistochemistry (1:50-1:200) The optimal working dilution should be determined by the end user.
<b>Storage Buffer</b>	In PBS, pH 7.2 (40% glycerol, 0.02% sodium azide)

**Storage Instruction**

Store at 4°C. For long term storage store at -20°C.  
Aliquot to avoid repeated freezing and thawing.

**Note**

This product contains sodium azide: a POISONOUS AND HAZARDOUS SUBSTANCE which should be handled by trained staff only.

## Applications

- Immunohistochemistry (Formalin/PFA-fixed paraffin-embedded sections)

Immunohistochemical staining of human bronchus with C16orf89 polyclonal antibody (Cat # PAB20664) shows strong nuclear and cytoplasmic and membranous positivity in respiratory epithelial cells.

## Gene Info — C16orf89

**Entrez GeneID**[146556](#)**Protein Accession#**[Q6UX73](#)**Gene Name**

C16orf89

**Gene Alias**

MGC45438

**Gene Description**

chromosome 16 open reading frame 89

**Gene Ontology**[Hyperlink](#)**Other Designations**

hypothetical protein LOC146556