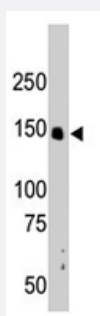


CRKRS polyclonal antibody

Catalog # PAB2066

Size 400 uL

Applications



Western Blot (Tissue lysate)

The CRKRS polyclonal antibody (Cat # PAB2066) is used in Western blot to detect CRKRS in mouse liver tissue lysate.

Specification

Product Description	Rabbit polyclonal antibody raised against synthetic peptide of CRKRS.
Immunogen	A synthetic peptide (conjugated with KLH) corresponding to N-terminus of human CRKRS.
Host	Rabbit
Reactivity	Human, Mouse
Form	Liquid
Purification	Protein G purification
Recommend Usage	Western Blot (1:1000) The optimal working dilution should be determined by the end user.
Storage Buffer	In PBS (0.09% sodium azide)
Storage Instruction	Store at 4°C. For long term storage store at -20°C. Aliquot to avoid repeated freezing and thawing.
Note	This product contains sodium azide: a POISONOUS AND HAZARDOUS SUBSTANCE which should be handled by trained staff only.

Applications

- Western Blot (Tissue lysate)

The CRKRS polyclonal antibody (Cat # PAB2066) is used in Western blot to detect CRKRS in mouse liver tissue lysate.

Gene Info — CRKRS

Entrez GeneID	51755
Protein Accession#	NP_057591:Q9NYV4
Gene Name	CRKRS
Gene Alias	CRK7, CRKR, KIAA0904
Gene Description	Cdc2-related kinase, arginine/serine-rich
Gene Ontology	Hyperlink
Gene Summary	O
Other Designations	CDC2-related protein kinase 7

Publication Reference

- [CrkRS: a novel conserved Cdc2-related protein kinase that colocalises with SC35 speckles.](#)

Ko TK, Kelly E, Pines J.

Journal of Cell Science 2001 Jul; 114(Pt 14):2591.

Application: IP, IP-WB, WB-Ce, WB-Tr, Human, Insect, Sf9, HeLa cells

Disease

- [Breast cancer](#)
- [Breast Neoplasms](#)
- [Genetic Predisposition to Disease](#)
- [Obesity](#)
- [Ovarian Failure](#)

- [Polycystic Ovary Syndrome](#)
- [Puberty](#)
- [Thrombophilia](#)
- [Tobacco Use Disorder](#)